

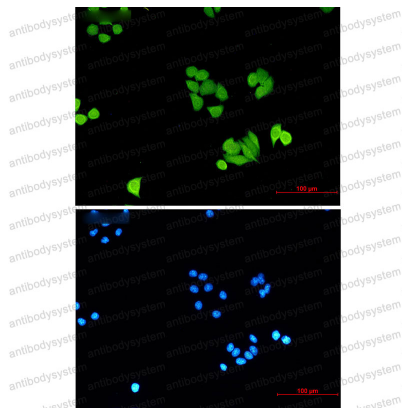
Anti-PLK1 Antibody (R1Y72)

Summary

Catalog No.	RHE97402
Clone ID	R1Y72
Host species	Rabbit
Tested applications	IF: 1:50-1:200, IP: 1:20, WB: 1:500-1:1000
Species reactivity	Human, Rat
Form	Liquid
Storage buffer	0.01M PBS, pH 7.4, 0.05% BSA, 50% Glycerol, 0.05% Sodium azide.
Concentration	1 mg/ml
Purity	>95% by SDS-PAGE.
Clonality	Monoclonal
Isotype	IgG
Applications	IF, IP, WB
Target	Serine/threonine-protein kinase 13, PLK-1, PLK1, PLK, STPK13, Serine/threonine-protein kinase PLK1, Polo-like kinase 1
Purification	Protein A/G purified from cell culture supernatant.
Endotoxin level	Please contact with the lab for this information.
Accession	P53350
Stability and Storage	Use a manual defrost freezer and avoid repeated freeze thaw cycles. Store at 4 °C for frequent use. Store at -20 °C for twelve months from the date of receipt.

Note For research use only.

Data Image



Immunofluorescence

Immunocytochemistry analysis of PLK1 (green) in Hela using PLK1 antibody, and DAPI (blue)



Western blot

Western blot analysis of PLK1 in Jurkat, C6 lysates using PLK1 antibody.