

Anti-KIF11 Antibody (R1Y64)

Summary

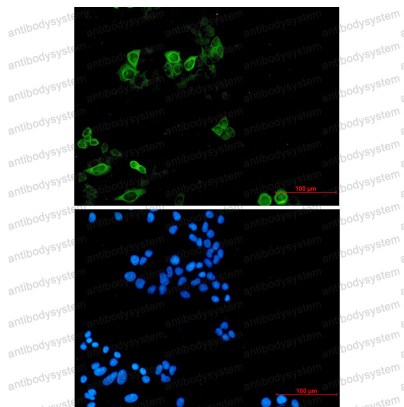
Catalog No.	RHE93201
Clone ID	R1Y64
Host species	Rabbit
Tested applications	IF: 1:50-1:200, IHC: 1:50-1:100, IP: 1:20, WB: 1:500-1:1000
Species reactivity	Human
Form	Liquid
Storage buffer	0.01M PBS, pH 7.4, 0.05% BSA, 50% Glycerol, 0.05% Sodium azide.
Concentration	1 mg/ml
Purity	>95% by SDS-PAGE.
Clonality	Monoclonal
Isotype	IgG
Applications	IF, IHC, IP, WB
Target	EG5, TR-interacting protein 5, Kinesin-like protein KIF11, TRIP-5, KNSL1, Kinesin-like spindle protein HKSP, TRIP5, Kinesin-related motor protein Eg5, Thyroid receptor-interacting protein 5, KIF11, Kinesin-like protein 1
Purification	Protein A/G purified from cell culture supernatant.
Endotoxin level	Please contact with the lab for this information.
Accession	P52732

Stability and Storage

Use a manual defrost freezer and avoid repeated freeze thaw cycles. Store at 4 °C for frequent use. Store at -20 °C for twelve months from the date of receipt.

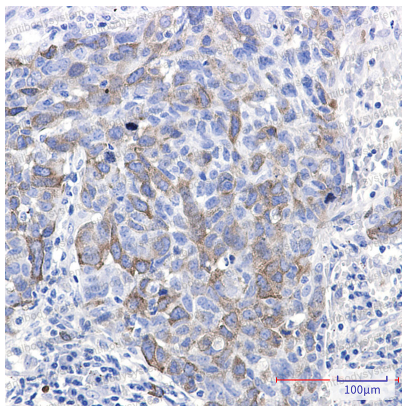
Note

For research use only.

Data Image

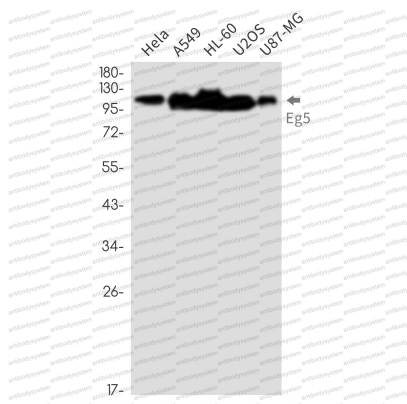
Immunofluorescence

Immunocytochemistry analysis of Eg5 (green) in hela using Eg5 antibody, and DAPI (blue)



Immunohistochemical

Immunohistochemistry analysis of paraffin-embedded Human lung cancer using Eg5 antibody. High-pressure and temperature Sodium Citrate pH 6.0 was used for antigen retrieval.



Western blot

Western blot analysis of Eg5 in HeLa, A549, HL-60, U2OS, U87-MG lysates using Eg5 antibody.