

# Anti-KIF11 Antibody (R1Y63)

## Summary

---

<b>Catalog No.</b>	RHE93202
<b>Clone ID</b>	R1Y63
<b>Host species</b>	Rabbit
<b>Tested applications</b>	IF: 1:50-1:200, WB: 1:500-1:1000
<b>Species reactivity</b>	Human, Mouse, Rat
<b>Form</b>	Liquid
<b>Storage buffer</b>	0.01M PBS, pH 7.4, 0.05% BSA, 50% Glycerol, 0.05% Sodium azide.
<b>Concentration</b>	1 mg/ml
<b>Purity</b>	>95% by SDS-PAGE.
<b>Clonality</b>	Monoclonal
<b>Isotype</b>	IgG
<b>Applications</b>	IF, WB
<b>Target</b>	EG5, TR-interacting protein 5, Kinesin-like protein KIF11, TRIP-5, KNSL1, Kinesin-like spindle protein HKSP, TRIP5, Kinesin-related motor protein Eg5, Thyroid receptor-interacting protein 5, KIF11, Kinesin-like protein 1
<b>Purification</b>	Protein A/G purified from cell culture supernatant.
<b>Endotoxin level</b>	Please contact with the lab for this information.
<b>Accession</b>	P52732

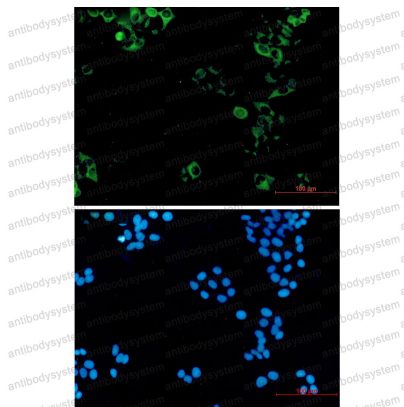
## Recombinant Proteins &amp; Antibodies

**Stability and Storage**

Use a manual defrost freezer and avoid repeated freeze thaw cycles. Store at 4 °C for frequent use. Store at -20 °C for twelve months from the date of receipt.

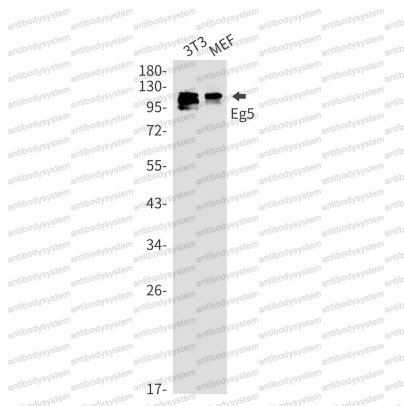
**Note**

For research use only.

**Data Image**

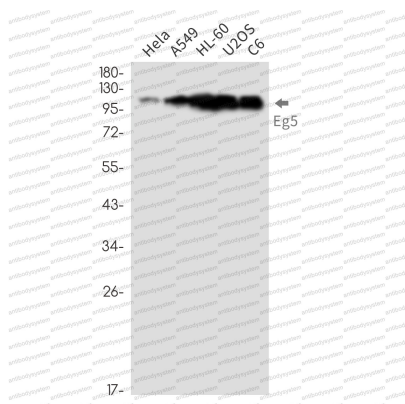
Immunofluorescence

Immunocytochemistry analysis of Eg5 (green) in hela using Eg5 antibody, and DAPI (blue)



Western blot

Western blot analysis of Eg5 in 3T3, MEF lysates using Eg5 antibody.



Western blot

Western blot analysis of Eg5 in HeLa, A549, HL-60, U2OS, C6 lysates using Eg5 antibody.