

Anti-MSH6 Antibody (R1Y61)

Summary

| | |
|----------------------------|--|
| Catalog No. | RHE93102 |
| Clone ID | R1Y61 |
| Host species | Rabbit |
| Tested applications | IF: 1:50-1:200, IHC: 1:50-1:100, WB: 1:500-1:1000 |
| Species reactivity | Human, Mouse, Rat |
| Form | Liquid |
| Storage buffer | 0.01M PBS, pH 7.4, 0.05% BSA, 50% Glycerol, 0.05% Sodium azide. |
| Concentration | 1 mg/ml |
| Purity | >95% by SDS-PAGE. |
| Clonality | Monoclonal |
| Isotype | IgG |
| Applications | IF, IHC, WB |
| Target | DNA mismatch repair protein Msh6, MutS protein homolog 6, MSH6, GTBP, hMSH6, GTMBP, G/T mismatch-binding protein, MutS-alpha 160 kDa subunit, p160 |
| Purification | Protein A/G purified from cell culture supernatant. |
| Endotoxin level | Please contact with the lab for this information. |
| Accession | P52701 |

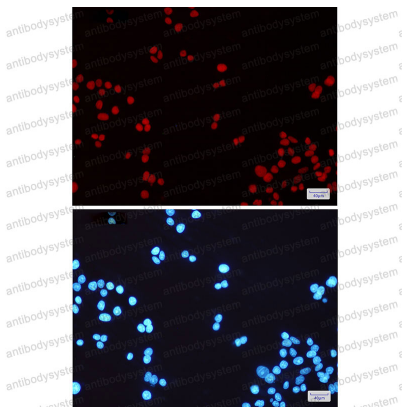
Stability and Storage

Use a manual defrost freezer and avoid repeated freeze thaw cycles. Store at 4 °C for frequent use. Store at -20 °C for twelve months from the date of receipt.

Note

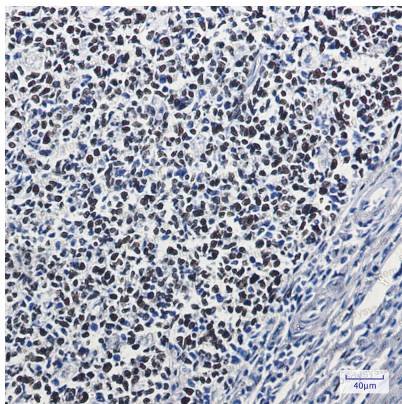
For research use only.

Data Image



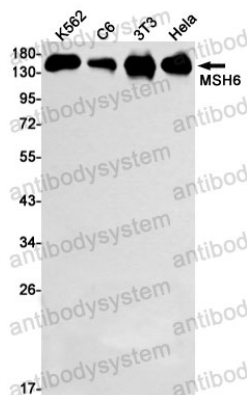
Immunofluorescence

Immunocytochemistry analysis of MSH6(green) in Hela using MSH6 antibody, and DAPI(blue)



Immunohistochemical

Immunohistochemistry analysis of paraffin-embedded Human tonsil using MSH6 antibody. High-pressure and temperature Sodium Citrate pH 6.0 was used for antigen retrieval.



Western blot

Western blot analysis of MSH6 in K562, C6, 3T3, Hela lysates using MSH6 antibody.