

Anti-CD198/CCR8 Antibody (R1Y35)

Summary

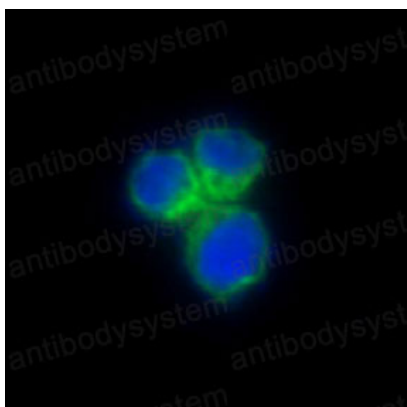
Catalog No.	RHE85601
Clone ID	R1Y35
Host species	Rabbit
Tested applications	IF: 1:50-1:200, WB: 1:1000-1:2000
Species reactivity	Human, Mouse, Rat
Form	Liquid
Storage buffer	0.01M PBS, pH 7.4, 0.05% BSA, 50% Glycerol, 0.05% Sodium azide.
Concentration	1 mg/ml
Purity	>95% by SDS-PAGE.
Clonality	Monoclonal
Isotype	IgG
Applications	IF, WB
Target	CKR-L1, CMKBR8, C-C CKR-8, GPR-CY6, CCR8, CMKBRL2, TER1, CCR-8, Chemokine receptor-like 1, CKRL1, CDw198, GPRCY6, C-C chemokine receptor type 8, CC-CKR-8, CC chemokine receptor CHEMR1
Purification	Protein A/G purified from cell culture supernatant.
Endotoxin level	Please contact with the lab for this information.
Accession	P51685

Stability and Storage

Use a manual defrost freezer and avoid repeated freeze thaw cycles. Store at 4 °C for frequent use. Store at -20 °C for twelve months from the date of receipt.

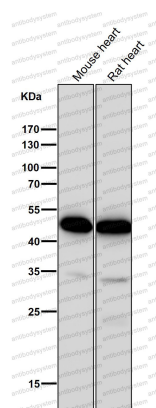
Note

For research use only.

Data Image

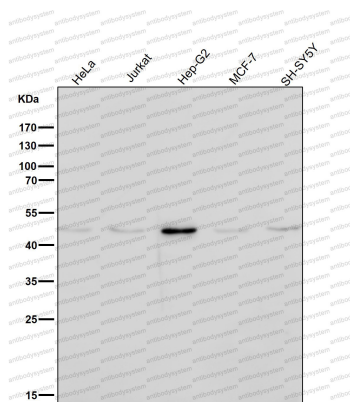
Immunofluorescence

Immunofluorescent analysis of HeLa cells, using CCR8 Antibody .



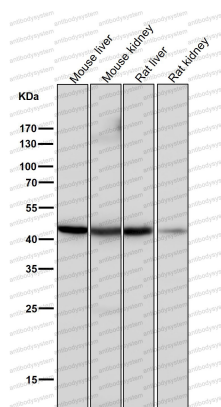
Western blot

All lanes use the Antibody at 1:1K dilution for 1 hour at room temperature.



Western blot

All lanes use the Antibody at 1:1K dilution for 1 hour at room temperature.



Western blot

All lanes use the Antibody at 1:1K dilution for 1 hour at room temperature.