

Anti-GCLC Antibody (R1X11)

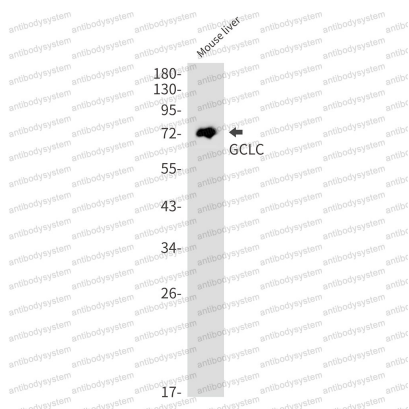
Summary

Catalog No.	RHE58201
Clone ID	R1X11
Host species	Rabbit
Tested applications	IP: 1:20, WB: 1:500-1:1000
Species reactivity	Mouse, Rat
Form	Liquid
Storage buffer	0.01M PBS, pH 7.4, 0.05% BSA, 50% Glycerol, 0.05% Sodium azide.
Concentration	1 mg/ml
Purity	>95% by SDS-PAGE.
Clonality	Monoclonal
Isotype	IgG
Applications	IP, WB
Target	Gamma-ECS, GCLC, Gamma-glutamylcysteine synthetase, GCS heavy chain, GLCLC, Glutamate--cysteine ligase catalytic subunit, GLCL
Purification	Protein A/G purified from cell culture supernatant.
Endotoxin level	Please contact with the lab for this information.
Accession	P48506
Stability and Storage	Use a manual defrost freezer and avoid repeated freeze thaw cycles. Store at 4 °C for frequent use. Store at -20 °C for twelve months from the date of receipt.

Note

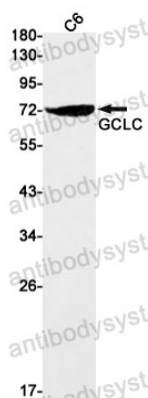
For research use only.

Data Image



Western blot

Western blot analysis of GCLC in mouse liver lysates using GCLC antibody.



Western blot

Western blot analysis of GCLC in C6 lysates using GCLC antibody.