

Anti-RAP1GAP Antibody (R1W92)

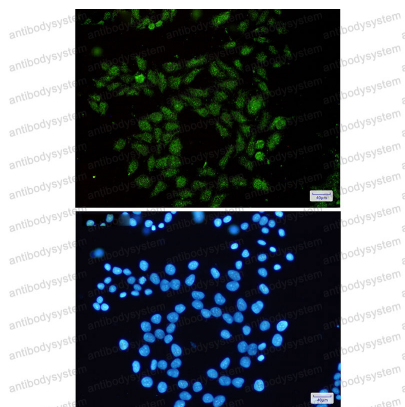
Summary

Catalog No.	RHE51002
Clone ID	R1W92
Host species	Rabbit
Tested applications	IF: 1:50-1:200, IHC: 1:50-1:100, IP: 1:20, WB: 1:500-1:1000
Species reactivity	Human, Mouse, Rat
Form	Liquid
Storage buffer	0.01M PBS, pH 7.4, 0.05% BSA, 50% Glycerol, 0.05% Sodium azide.
Concentration	1 mg/ml
Purity	>95% by SDS-PAGE.
Clonality	Monoclonal
Isotype	IgG
Applications	IF, IHC, IP, WB
Target	Rap1GAP1, KIAA0474, RAP1GA1, RAP1GAP, Rap1GAP, Rap1 GTPase-activating protein 1
Purification	Protein A/G purified from cell culture supernatant.
Endotoxin level	Please contact with the lab for this information.
Accession	P47736
Stability and Storage	Use a manual defrost freezer and avoid repeated freeze thaw cycles. Store at 4 °C for frequent use. Store at -20 °C for twelve months from the date of receipt.

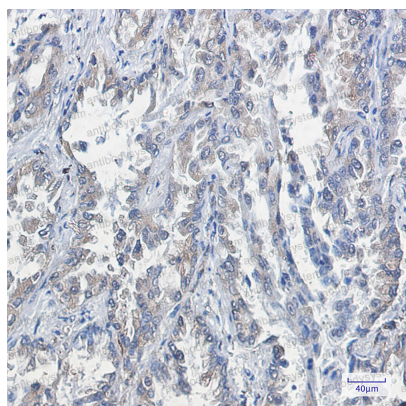
Note

For research use only.

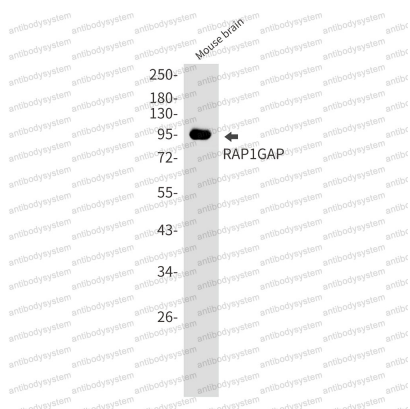
Data Image

**Immunofluorescence**

Immunocytochemistry analysis of RAP1GAP(green) in Hela using RAP1GAP antibody, and DAPI(blue).

**Immunohistochemical**

Immunohistochemistry analysis of paraffin-embedded Human lung cancer using RAP1GAP antibody. High-pressure and temperature Sodium Citrate pH 6.0 was used for antigen retrieval.



Western blot

Western blot analysis of RAP1GAP in mouse brain lysates using RAP1GAP antibody.



Western blot

Western blot analysis of RAP1GAP in rat Brain, HeLa lysates using RAP1GAP antibody.