

# Anti-JNK1/JNK3 Antibody (R1W65)

## Summary

---

<b>Catalog No.</b>	RHE45805
<b>Clone ID</b>	R1W65
<b>Host species</b>	Rabbit
<b>Tested applications</b>	IP: 1:20-1:50, WB: 1:1000-1:2000
<b>Species reactivity</b>	Human, Mouse, Rat
<b>Form</b>	Liquid
<b>Storage buffer</b>	0.01M PBS, pH 7.4, 0.05% BSA, 50% Glycerol, 0.05% Sodium azide.
<b>Concentration</b>	1 mg/ml
<b>Purity</b>	>95% by SDS-PAGE.
<b>Clonality</b>	Monoclonal
<b>Isotype</b>	IgG
<b>Applications</b>	IP, WB
<b>Target</b>	MAP kinase 8, JNK1, SAPK1C, Stress-activated protein kinase 1c, Mitogen-activated protein kinase 8, SAPK1, c-Jun N-terminal kinase 1, SAPK1c, MAPK8, Stress-activated protein kinase JNK1, PRKM8, JNK-46, MAPK 8
<b>Purification</b>	Protein A/G purified from cell culture supernatant.
<b>Endotoxin level</b>	Please contact with the lab for this information.
<b>Accession</b>	P45983, P53779

**Stability and Storage**

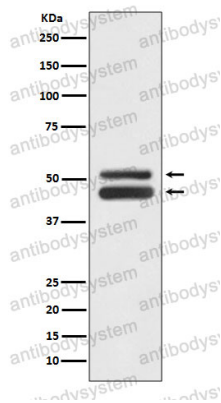
Use a manual defrost freezer and avoid repeated freeze thaw cycles. Store at 4 °C for frequent use. Store at -20 °C for twelve months from the date of receipt.

**Note**

For research use only.

**Data Image**

---



Western blot

Western blot analysis of JNK1/JNK3 expression in HeLa cell lysate.