

# Anti-NKX2-1 Antibody (R1W56)

## Summary

---

<b>Catalog No.</b>	RHE44602
<b>Clone ID</b>	R1W56
<b>Host species</b>	Rabbit
<b>Tested applications</b>	IHC: 1:100-1:200, WB: 1:1000-1:2000
<b>Species reactivity</b>	Human, Mouse, Rat
<b>Form</b>	Liquid
<b>Storage buffer</b>	0.01M PBS, pH 7.4, 0.05% BSA, 50% Glycerol, 0.05% Sodium azide.
<b>Concentration</b>	1 mg/ml
<b>Purity</b>	>95% by SDS-PAGE.
<b>Clonality</b>	Monoclonal
<b>Isotype</b>	IgG
<b>Applications</b>	IHC, WB
<b>Target</b>	Thyroid-specific enhancer-binding protein, Homeobox protein NK-2 homolog A, TTF1, Homeobox protein Nkx-2.1, NKX2-1, TITF1, Thyroid transcription factor 1, NKX2A, Thyroid nuclear factor 1, T/EBP, TTF-1
<b>Purification</b>	Protein A/G purified from cell culture supernatant.
<b>Endotoxin level</b>	Please contact with the lab for this information.
<b>Accession</b>	P43699

**Stability and Storage**

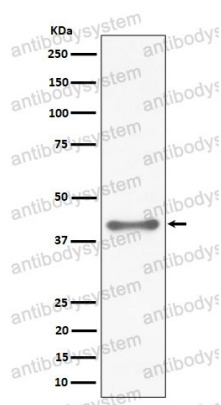
Use a manual defrost freezer and avoid repeated freeze thaw cycles. Store at 4 °C for frequent use. Store at -20 °C for twelve months from the date of receipt.

**Note**

For research use only.

**Data Image**

---



Western blot

Western blot analysis of TTF1 expression in HeLa cell lysate.