

Anti-NKX2-1 Antibody (R1W55)

Summary

Catalog No.	RHE44603
Clone ID	R1W55
Host species	Rabbit
Tested applications	IHC: 1:100-1:200, WB: 1:1000-1:2000
Species reactivity	Human, Mouse, Rat
Form	Liquid
Storage buffer	0.01M PBS, pH 7.4, 0.05% BSA, 50% Glycerol, 0.05% Sodium azide.
Concentration	1 mg/ml
Purity	>95% by SDS-PAGE.
Clonality	Monoclonal
Isotype	IgG
Applications	IHC, WB
Target	Thyroid-specific enhancer-binding protein, Homeobox protein NK-2 homolog A, TTF1, Homeobox protein Nkx-2.1, NKX2-1, TITF1, Thyroid transcription factor 1, NKX2A, Thyroid nuclear factor 1, T/EBP, TTF-1
Purification	Protein A/G purified from cell culture supernatant.
Endotoxin level	Please contact with the lab for this information.
Accession	P43699

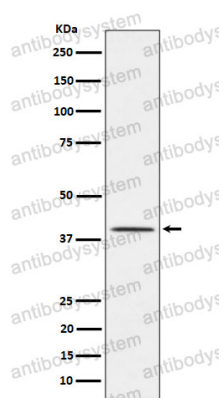
Stability and Storage

Use a manual defrost freezer and avoid repeated freeze thaw cycles. Store at 4 °C for frequent use. Store at -20 °C for twelve months from the date of receipt.

Note

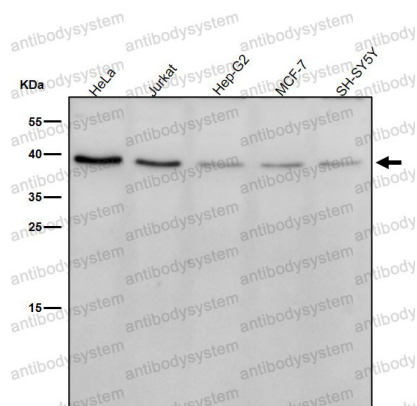
For research use only.

Data Image



Western blot

Western blot analysis of TTF1 expression in Rat lung cell lysate.



Western blot

All lanes use the Antibody at 1:1K dilution for 1 hour at room temperature.