

# Anti-CDKN2A/p16INK4a Antibody (R1W29)

## Summary

---

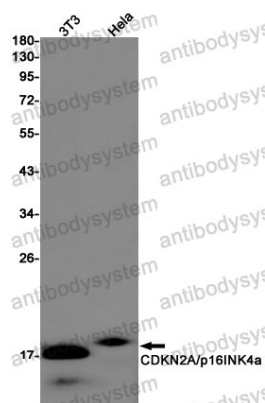
<b>Catalog No.</b>	RHE37701
<b>Clone ID</b>	R1W29
<b>Host species</b>	Rabbit
<b>Tested applications</b>	IP: 1:20, WB: 1:500-1:1000
<b>Species reactivity</b>	Human, Mouse
<b>Form</b>	Liquid
<b>Storage buffer</b>	0.01M PBS, pH 7.4, 0.05% BSA, 50% Glycerol, 0.05% Sodium azide.
<b>Concentration</b>	1 mg/ml
<b>Purity</b>	>95% by SDS-PAGE.
<b>Clonality</b>	Monoclonal
<b>Isotype</b>	IgG
<b>Applications</b>	IP, WB
<b>Target</b>	p16-INK4, Multiple tumor suppressor 1, MTS-1, MTS1, Cyclin-dependent kinase 4 inhibitor A, p16-INK4a, Cyclin-dependent kinase inhibitor 2A, CDKN2A, p16INK4A, CDKN2, CDK4I
<b>Purification</b>	Protein A/G purified from cell culture supernatant.
<b>Endotoxin level</b>	Please contact with the lab for this information.
<b>Accession</b>	P42771

**Stability and Storage**

Use a manual defrost freezer and avoid repeated freeze thaw cycles. Store at 4 °C for frequent use. Store at -20 °C for twelve months from the date of receipt.

**Note**

For research use only.

**Data Image**

Western blot

Western blot analysis of CDKN2A/p16INK4a in 3T3, HeLa lysates using CDKN2A antibody.