

# Anti-CASP3/Caspase-3 Antibody (R1W20)

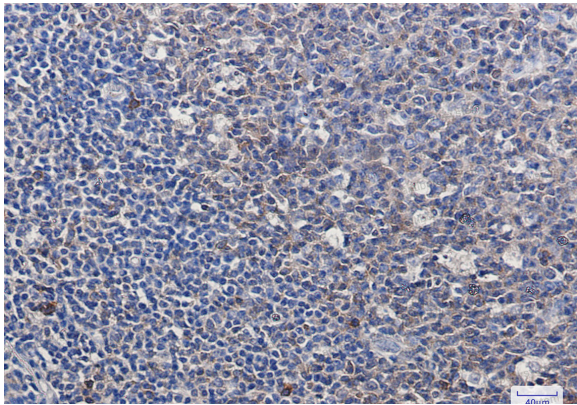
## Summary

---

|                              |   |
|------------------------------|---|
| <b>Catalog No.</b>           | RHE35906  |
| <b>Clone ID</b>              | R1W20   |
| <b>Host species</b>          | Rabbit  |
| <b>Tested applications</b>   | IHC: 1:50-1:100, IP: 1:20, WB: 1:500-1:1000   |
| <b>Species reactivity</b>    | Human, Mouse  |
| <b>Form</b>                  | Liquid  |
| <b>Storage buffer</b>        | 0.01M PBS, pH 7.4, 0.05% BSA, 50% Glycerol, 0.05% Sodium azide.   |
| <b>Concentration</b>         | 1 mg/ml   |
| <b>Purity</b>                | >95% by SDS-PAGE.   |
| <b>Clonality</b>             | Monoclonal  |
| <b>Isotype</b>               | IgG   |
| <b>Applications</b>          | IHC, IP, WB   |
| <b>Target</b>                | Caspase-3, CPP-32, CPP32, CASP-3, SREBP cleavage activity 1, CASP3, Apopain, SCA-1, Cysteine protease CPP32, Protein Yama                                       |
| <b>Purification</b>          | Protein A/G purified from cell culture supernatant.   |
| <b>Endotoxin level</b>       | Please contact with the lab for this information.   |
| <b>Accession</b>             | P42574  |
| <b>Stability and Storage</b> | Use a manual defrost freezer and avoid repeated freeze thaw cycles. Store at 4 °C for frequent use. Store at -20 °C for twelve months from the date of receipt. |

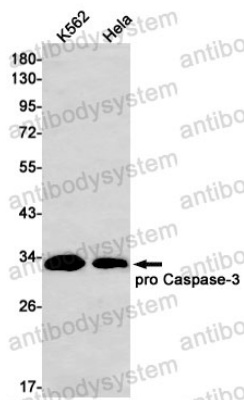
Note For research use only.

## Data Image



Immunohistochemical

Immunohistochemistry analysis of paraffin-embedded Human tonsil using pro Caspase 3 antibody. High-pressure and temperature Sodium Citrate pH 6.0 was used for antigen retrieval.



Western blot

Western blot analysis of Pro Caspase3 in K562, HeLa lysates using Caspase 3 antibody.