

Anti-Cleaved-Caspase 3 p12 Antibody (R1W18)

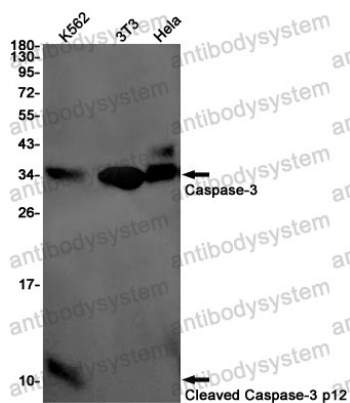
Summary

Catalog No.	RHE35904
Clone ID	R1W18
Host species	Rabbit
Tested applications	IF: 1:50-1:200, WB: 1:500-1:1000
Species reactivity	Human, Mouse, Rat
Form	Liquid
Storage buffer	0.01M PBS, pH 7.4, 0.05% BSA, 50% Glycerol, 0.05% Sodium azide.
Concentration	1 mg/ml
Purity	>95% by SDS-PAGE.
Clonality	Monoclonal
Isotype	IgG
Applications	IF, WB
Target	Caspase-3, CPP-32, CPP32, CASP-3, SREBP cleavage activity 1, CASP3, Apopain, SCA-1, Cysteine protease CPP32, Protein Yama
Purification	Protein A/G purified from cell culture supernatant.
Endotoxin level	Please contact with the lab for this information.
Accession	P42574
Stability and Storage	Use a manual defrost freezer and avoid repeated freeze thaw cycles. Store at 4 °C for frequent use. Store at -20 °C for twelve months from the date of receipt.

Note

For research use only.

Data Image



Western blot

Western blot analysis of Caspase3 p12 in K562, 3T3, HeLa lysates using Cleaved-Caspase 3 p12 antibody.