

Anti-Phospho-MTOR (Ser2448) Antibody (R1W17)

Summary

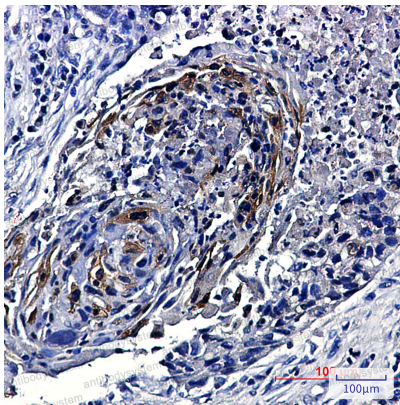
Catalog No.	RHE35401
Clone ID	R1W17
Host species	Rabbit
Tested applications	IHC: 1:50-1:100, WB: 1:500-1:1000
Species reactivity	Human, Mouse
Form	Liquid
Storage buffer	0.01M PBS, pH 7.4, 0.05% BSA, 50% Glycerol, 0.05% Sodium azide.
Concentration	1 mg/ml
Purity	>95% by SDS-PAGE.
Clonality	Monoclonal
Isotype	IgG
Applications	IHC, WB
Target	RAFT1, Rapamycin target protein 1, Mechanistic target of rapamycin, FRAP, FKBP12-rapamycin complex-associated protein, mTOR, FRAP1, FK506-binding protein 12-rapamycin complex-associated protein 1, Rapamycin and FKBP12 target 1, FRAP2, RAPT1, Serine/threonine-protein kinase mTOR, Mammalian target of rapamycin, MTOR
Purification	Protein A/G purified from cell culture supernatant.
Endotoxin level	Please contact with the lab for this information.
Accession	P42345

Stability and Storage

Use a manual defrost freezer and avoid repeated freeze thaw cycles. Store at 4 °C for frequent use. Store at -20 °C for twelve months from the date of receipt.

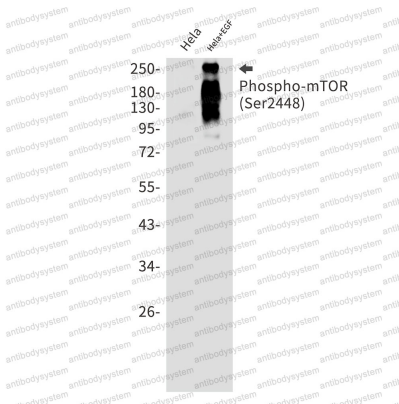
Note

For research use only.

Data Image

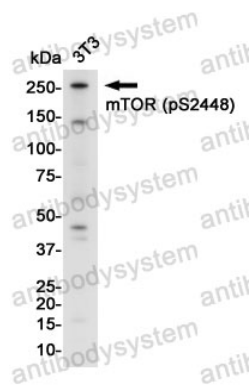
Immunohistochemical

Immunohistochemistry analysis of paraffin-embedded Human lung cancer using Phospho-mTOR (Ser2448) antibody. High-pressure and temperature Sodium Citrate pH 6.0 was used for antigen retrieval.



Western blot

Western blot analysis of Phospho-mTOR (Ser2448) in Hela, Hela+EGF lysates using Phospho-mTOR (Ser2448) antibody.



Western blot

Western blot analysis of mTOR (Phospho-Ser2448) in 3t3 lysates using mTOR (Phospho-Ser2448) antibody.