

Anti-PIK3CB/p110beta Antibody (R1W15)

Summary

Catalog No.	RHE35302
Clone ID	R1W15
Host species	Rabbit
Tested applications	FCM: 1:20-1:100, IP: 1:20-1:50, WB: 1:1000-1:2000
Species reactivity	Human
Form	Liquid
Storage buffer	0.01M PBS, pH 7.4, 0.05% BSA, 50% Glycerol, 0.05% Sodium azide.
Concentration	1 mg/ml
Purity	>95% by SDS-PAGE.
Clonality	Monoclonal
Isotype	IgG
Applications	FCM, IP, WB
Target	p110beta, PI3Kbeta, PtdIns-3-kinase subunit p110-beta, Phosphatidylinositol 4,5-bisphosphate 3-kinase catalytic subunit beta isoform, PIK3CB, Phosphatidylinositol 4,5-bisphosphate 3-kinase 110 kDa catalytic subunit beta, PtdIns-3-kinase subunit beta, PI3-kinase subunit beta, PIK3C1, PI3K-beta
Purification	Protein A/G purified from cell culture supernatant.
Endotoxin level	Please contact with the lab for this information.
Accession	P42338

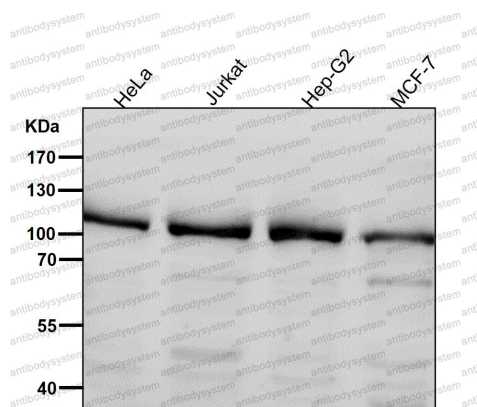
Recombinant Proteins & Antibodies

Stability and Storage

Use a manual defrost freezer and avoid repeated freeze thaw cycles. Store at 4 °C for frequent use. Store at -20 °C for twelve months from the date of receipt.

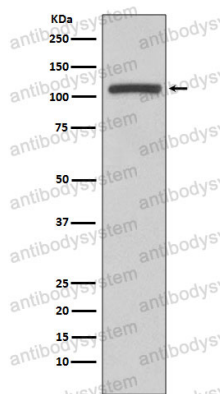
Note

For research use only.

Data Image

Western blot

All lanes use the Antibody at 1:1K dilution for 1 hour at room temperature.



Western blot

Western blot analysis of PI3 Kinase p110 beta expression in Jurkat cell lysate.