

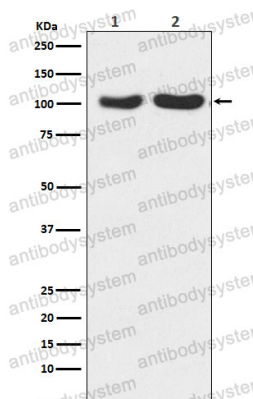
Anti-GRIA2/3 Antibody (R1W11)

Summary

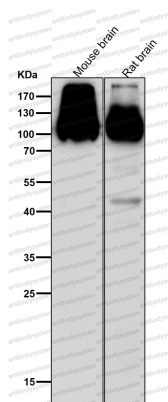
Catalog No.	RHE34704
Clone ID	R1W11
Host species	Rabbit
Tested applications	IP: 1:20-1:50, WB: 1:1000-1:2000
Species reactivity	Human, Mouse, Rat
Form	Liquid
Storage buffer	0.01M PBS, pH 7.4, 0.05% BSA, 50% Glycerol, 0.05% Sodium azide.
Concentration	1 mg/ml
Purity	>95% by SDS-PAGE.
Clonality	Monoclonal
Isotype	IgG
Applications	IP, WB
Target	GluR-2, AMPA-selective glutamate receptor 2, GluR-B, Glutamate receptor 2, GLUR2, GRIA2, GluA2, Glutamate receptor ionotropic, AMPA 2, GluR-K2
Purification	Protein A/G purified from cell culture supernatant.
Endotoxin level	Please contact with the lab for this information.
Accession	P42262, P42263
Stability and Storage	Use a manual defrost freezer and avoid repeated freeze thaw cycles. Store at 4 °C for frequent use. Store at -20 °C for twelve months from the date of receipt.

Note

For research use only.

Data Image**Western blot**

Western blot analysis of GluR2+GluR3 expression in (1) Human fetal brain lysate; (2) Mouse brain lysate.

**Western blot**

All lanes use the Antibody at 1:1K dilution for 1 hour at room temperature.