

# Anti-Phospho-GRIA1/GluR-1 (S845) Antibody (R1W07)

## Summary

---

<b>Catalog No.</b>	RHE34603
<b>Clone ID</b>	R1W07
<b>Host species</b>	Rabbit
<b>Tested applications</b>	WB: 1:1000-1:2000
<b>Species reactivity</b>	Human, Mouse, Rat
<b>Form</b>	Liquid
<b>Storage buffer</b>	0.01M PBS, pH 7.4, 0.05% BSA, 50% Glycerol, 0.05% Sodium azide.
<b>Concentration</b>	1 mg/ml
<b>Purity</b>	>95% by SDS-PAGE.
<b>Clonality</b>	Monoclonal
<b>Isotype</b>	IgG
<b>Applications</b>	WB
<b>Target</b>	GluR-A, GRIA1, GLUH1, GluR-1, Glutamate receptor ionotropic, AMPA 1, GluR-K1, GLUR1, Glutamate receptor 1, AMPA-selective glutamate receptor 1, GluA1
<b>Purification</b>	Protein A/G purified from cell culture supernatant.
<b>Endotoxin level</b>	Please contact with the lab for this information.
<b>Accession</b>	P42261

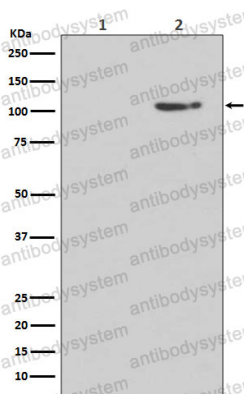
## Stability and Storage

Use a manual defrost freezer and avoid repeated freeze thaw cycles. Store at 4 °C for frequent use. Store at -20 °C for twelve months from the date of receipt.

## Note

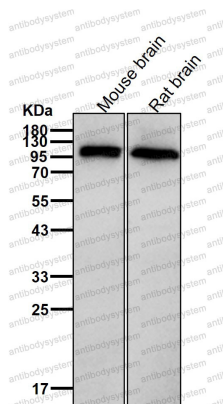
For research use only.

## Data Image



Western blot

Western blot analysis of Phospho-GluR1 (S845) expression in (1) Human brain lysate treated with Lambda phosphatase lysate; (2) Human brain lysate.



Western blot

All lanes use the Antibody at 1:2K dilution for 1 hour at room temperature.