

# Anti-CHOP/GADD153/DDIT3 Antibody (R1V22)

## Summary

---

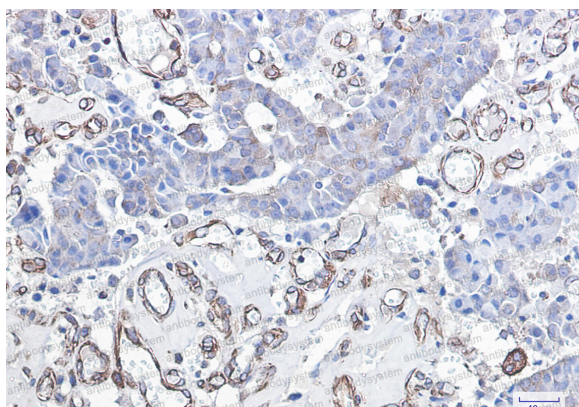
|                            |  |
|----------------------------|--|
| <b>Catalog No.</b>         | RHE14401   |
| <b>Clone ID</b>            | R1V22  |
| <b>Host species</b>        | Rabbit   |
| <b>Tested applications</b> | IHC: 1:50-1:100, WB: 1:500-1:1000  |
| <b>Species reactivity</b>  | Human, Mouse   |
| <b>Form</b>                | Liquid   |
| <b>Storage buffer</b>      | 0.01M PBS, pH 7.4, 0.05% BSA, 50% Glycerol, 0.05% Sodium azide.  |
| <b>Concentration</b>       | 1 mg/ml  |
| <b>Purity</b>              | >95% by SDS-PAGE.  |
| <b>Clonality</b>           | Monoclonal   |
| <b>Isotype</b>             | IgG  |
| <b>Applications</b>        | IHC, WB  |
| <b>Target</b>              | C/EBP-homologous protein, DDIT3, DDIT-3, CCAAT/enhancer-binding protein homologous protein, C/EBP zeta, CHOP-10, Growth arrest and DNA damage-inducible protein GADD153, DNA damage-inducible transcript 3 protein, GADD153, CHOP10, C/EBP-homologous protein 10, CHOP |
| <b>Purification</b>        | Protein A/G purified from cell culture supernatant.  |
| <b>Endotoxin level</b>     | Please contact with the lab for this information.  |
| <b>Accession</b>           | P35638   |

**Stability and Storage**

Use a manual defrost freezer and avoid repeated freeze thaw cycles. Store at 4 °C for frequent use. Store at -20 °C for twelve months from the date of receipt.

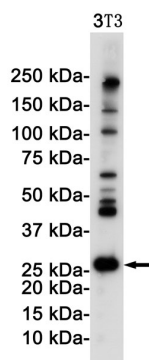
**Note**

For research use only.

**Data Image**

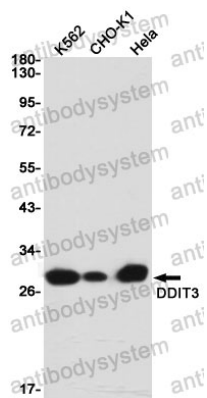
Immunohistochemical

Immunohistochemistry analysis of paraffin-embedded Human breast cancer using DDIT3 antibody. High-pressure and temperature Sodium Citrate pH 6.0 was used for antigen retrieval.



Western blot

Western blot analysis of DDIT3 in 3T3 lysates using DDIT3 antibody.



Western blot

Western blot analysis of DDIT3 in K562, CHO-K1, HeLa lysates using DDIT3 antibody.