

# Anti-ABCC1/MRP1 Antibody (R1U68)

## Summary

---

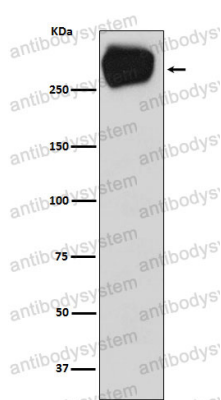
<b>Catalog No.</b>	RHE03202
<b>Clone ID</b>	R1U68
<b>Host species</b>	Rabbit
<b>Tested applications</b>	FCM: 1:20-1:100, WB: 1:1000-1:2000
<b>Species reactivity</b>	Human
<b>Form</b>	Liquid
<b>Storage buffer</b>	0.01M PBS, pH 7.4, 0.05% BSA, 50% Glycerol, 0.05% Sodium azide.
<b>Concentration</b>	1 mg/ml
<b>Purity</b>	>95% by SDS-PAGE.
<b>Clonality</b>	Monoclonal
<b>Isotype</b>	IgG
<b>Applications</b>	FCM, WB
<b>Target</b>	Leukotriene C(4) transporter, ABCC1, MRP, Multidrug resistance-associated protein 1, MRP1, Glutathione-S-conjugate-translocating ATPase ABCC1, LTC4 transporter, ATP-binding cassette sub-family C member 1
<b>Purification</b>	Protein A/G purified from cell culture supernatant.
<b>Endotoxin level</b>	Please contact with the lab for this information.
<b>Accession</b>	P33527

**Stability and Storage**

Use a manual defrost freezer and avoid repeated freeze thaw cycles. Store at 4 °C for frequent use. Store at -20 °C for twelve months from the date of receipt.

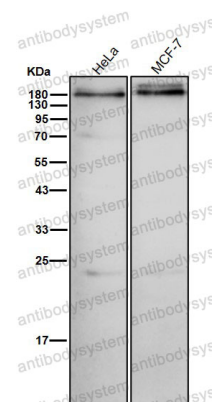
**Note**

For research use only.

**Data Image**

Western blot

Western blot analysis of MRP1 expression in A431 cell lysate.



Western blot

All lanes use the Antibody at 1:2K dilution for 1 hour at room temperature.