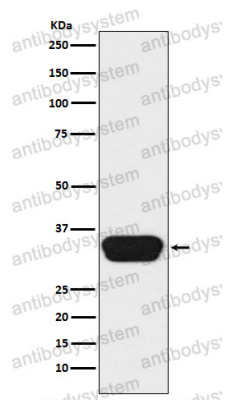


Anti-OTX1 Antibody (R1U46)

Summary

Catalog No.	RHD99002
Clone ID	R1U46
Host species	Rabbit
Tested applications	IHC: 1:100-1:200, ChIP: 1:20-1:50, WB: 1:1000-1:2000
Species reactivity	Human, Mouse, Rat
Form	Liquid
Storage buffer	0.01M PBS, pH 7.4, 0.05% BSA, 50% Glycerol, 0.05% Sodium azide.
Concentration	1 mg/ml
Purity	>95% by SDS-PAGE.
Clonality	Monoclonal
Isotype	IgG
Applications	IHC, ChIP, WB
Target	OTX1, Homeobox protein OTX1, Orthodenticle homolog 1
Purification	Protein A/G purified from cell culture supernatant.
Endotoxin level	Please contact with the lab for this information.
Accession	P32242
Stability and Storage	Use a manual defrost freezer and avoid repeated freeze thaw cycles. Store at 4 °C for frequent use. Store at -20 °C for twelve months from the date of receipt.
Note	For research use only.

Data Image



Western blot

Western blot analysis of Otx1/2 expression in Y79 cell lysate.