

# Anti-AKT1 Antibody (R1U31)

## Summary

---

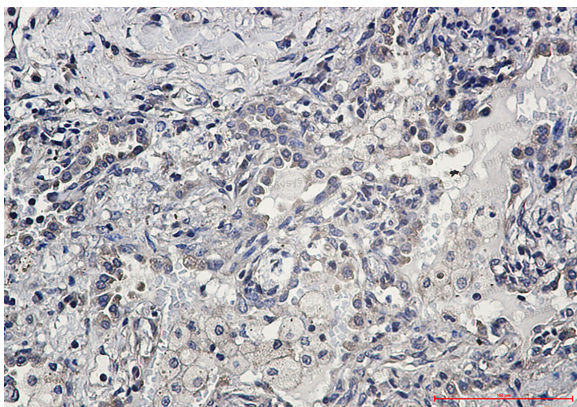
<b>Catalog No.</b>	RHD96509
<b>Clone ID</b>	R1U31
<b>Host species</b>	Rabbit
<b>Tested applications</b>	IF: 1:50-1:200, IHC: 1:50-1:100, IP: 1:20, WB: 1:500-1:1000
<b>Species reactivity</b>	Human, Mouse, Rat, Hamster
<b>Form</b>	Liquid
<b>Storage buffer</b>	0.01M PBS, pH 7.4, 0.05% BSA, 50% Glycerol, 0.05% Sodium azide.
<b>Concentration</b>	1 mg/ml
<b>Purity</b>	>95% by SDS-PAGE.
<b>Clonality</b>	Monoclonal
<b>Isotype</b>	IgG
<b>Applications</b>	IF, IHC, IP, WB
<b>Target</b>	RAC-alpha serine/threonine-protein kinase, RAC, RAC-PK-alpha, PKB alpha, Proto-oncogene c-Akt, Protein kinase B alpha, Protein kinase B, AKT1, PKB
<b>Purification</b>	Protein A/G purified from cell culture supernatant.
<b>Endotoxin level</b>	Please contact with the lab for this information.
<b>Accession</b>	P31749, P31751, Q9Y243

**Stability and Storage**

Use a manual defrost freezer and avoid repeated freeze thaw cycles. Store at 4 °C for frequent use. Store at -20 °C for twelve months from the date of receipt.

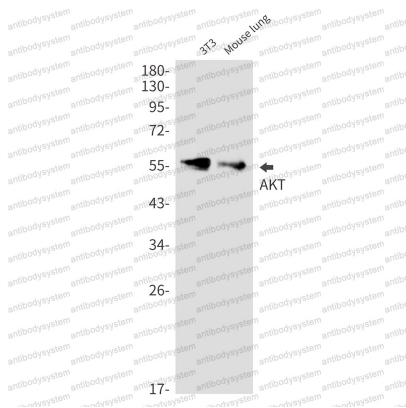
**Note**

For research use only.

**Data Image**

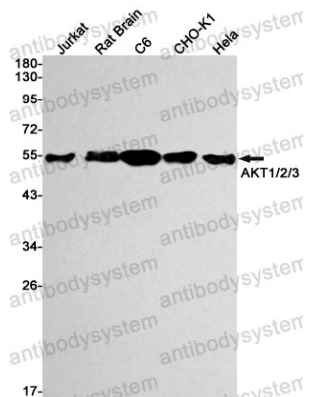
Immunohistochemical

Immunohistochemistry analysis of paraffin-embedded Human lung cancer using AKT1/2/3 antibody. High-pressure and temperature Sodium Citrate pH 6.0 was used for antigen retrieval.



Western blot

Western blot analysis of AKT in 3T3, mouse lung lysates using AKT antibody.



Western blot

Western blot analysis of AKT1/2/3 in Jurkat, rat Brain, C6, CHO-K1, HeLa lysates using AKT antibody.