

Anti-ADSS2 Antibody (R1U01)

Summary

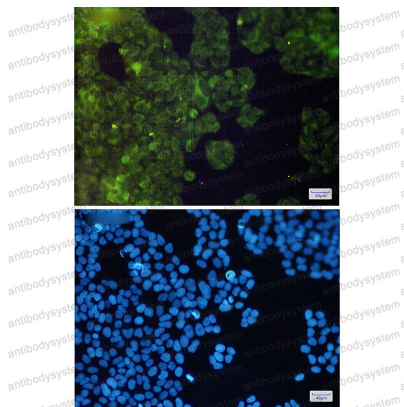
Catalog No.	RHD89401
Clone ID	R1U01
Host species	Rabbit
Tested applications	IF: 1:50-1:200, WB: 1:500-1:1000
Species reactivity	Human, Mouse, Rat
Form	Liquid
Storage buffer	0.01M PBS, pH 7.4, 0.05% BSA, 50% Glycerol, 0.05% Sodium azide.
Concentration	1 mg/ml
Purity	>95% by SDS-PAGE.
Clonality	Monoclonal
Isotype	IgG
Applications	IF, WB
Target	ADSS, AdSS 2, L-type adenylosuccinate synthetase, Adenylosuccinate synthetase, acidic isozyme, AMPSase 2, Adenylosuccinate synthetase, liver isozyme, IMP--aspartate ligase 2, ADSS2, Adenylosuccinate synthetase isozyme 2
Purification	Protein A/G purified from cell culture supernatant.
Endotoxin level	Please contact with the lab for this information.
Accession	P30520

Stability and Storage

Use a manual defrost freezer and avoid repeated freeze thaw cycles. Store at 4 °C for frequent use. Store at -20 °C for twelve months from the date of receipt.

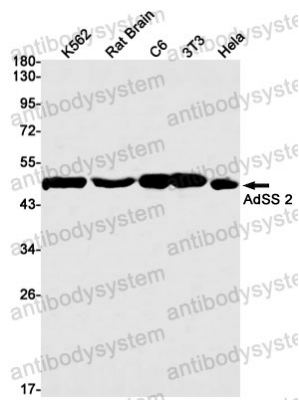
Note

For research use only.

Data Image

Immunofluorescence

Immunocytochemistry analysis of AdSS 2(green) in Hela using AdSS 2 antibody, and DAPI(blue)



Western blot

Western blot analysis of AdSS 2 in K562, rat Brain, C6, 3T3, Hela lysates using AdSS 2 antibody.