

# Anti-PPIF Antibody (R1T96)

## Summary

---

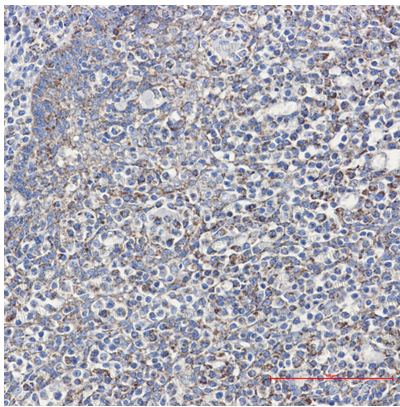
<b>Catalog No.</b>	RHD88601
<b>Clone ID</b>	R1T96
<b>Host species</b>	Rabbit
<b>Tested applications</b>	IHC: 1:50-1:100, WB: 1:500-1:1000
<b>Species reactivity</b>	Human, Mouse, Rat
<b>Form</b>	Liquid
<b>Storage buffer</b>	0.01M PBS, pH 7.4, 0.05% BSA, 50% Glycerol, 0.05% Sodium azide.
<b>Concentration</b>	1 mg/ml
<b>Purity</b>	>95% by SDS-PAGE.
<b>Clonality</b>	Monoclonal
<b>Isotype</b>	IgG
<b>Applications</b>	IHC, WB
<b>Target</b>	CypD, Peptidyl-prolyl cis-trans isomerase F, mitochondrial, Cyclophilin D, Cyclophilin F, CYP3, CyP-M, Rotamase F, PPIF, CyP-D, PPIase F, Mitochondrial cyclophilin
<b>Purification</b>	Protein A/G purified from cell culture supernatant.
<b>Endotoxin level</b>	Please contact with the lab for this information.
<b>Accession</b>	P30405

**Stability and Storage**

Use a manual defrost freezer and avoid repeated freeze thaw cycles. Store at 4 °C for frequent use. Store at -20 °C for twelve months from the date of receipt.

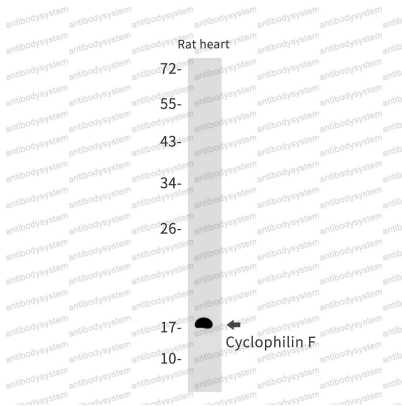
**Note**

For research use only.

**Data Image**

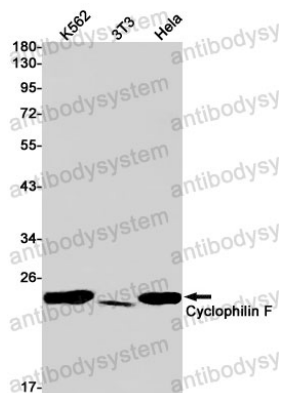
Immunohistochemical

Immunohistochemistry analysis of paraffin-embedded Human tonsil using Cyclophilin F antibody. High-pressure and temperature Sodium Citrate pH 6.0 was used for antigen retrieval.



Western blot

Western blot analysis of Cyclophilin F in rat heart lysates using Cyclophilin F antibody.



Western blot

Western blot analysis of Cyclophilin F in K562, 3T3, HeLa lysates using Cyclophilin F antibody.