

Anti-MAPK1 Antibody (R1T59)

Summary

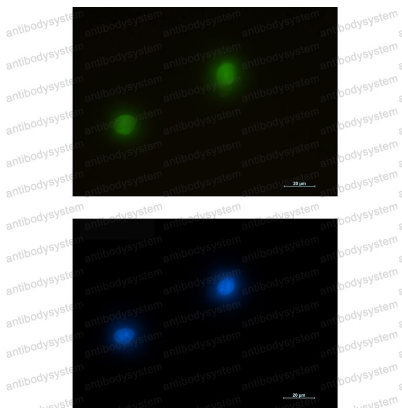
| | |
|----------------------------|---|
| Catalog No. | RHD79501 |
| Clone ID | R1T59 |
| Host species | Rabbit |
| Tested applications | IF: 1:50-1:200, IHC: 1:50-1:100, IP: 1:20, WB: 1:500-1:1000 |
| Species reactivity | Human, Mouse, Rat |
| Form | Liquid |
| Storage buffer | 0.01M PBS, pH 7.4, 0.05% BSA, 50% Glycerol, 0.05% Sodium azide. |
| Concentration | 1 mg/ml |
| Purity | >95% by SDS-PAGE. |
| Clonality | Monoclonal |
| Isotype | IgG |
| Applications | IF, IHC, IP, WB |
| Target | MAP kinase isoform p42, PRKM2, Extracellular signal-regulated kinase 2, MAPK 2, Mitogen-activated protein kinase 1, PRKM1, p42-MAPK, Mitogen-activated protein kinase 2, MAP kinase 1, MAP kinase 2, ERK2, ERT1, ERK-2, MAPK 1, MAPK1 |
| Purification | Protein A/G purified from cell culture supernatant. |
| Endotoxin level | Please contact with the lab for this information. |
| Accession | P28482 |

Stability and Storage

Use a manual defrost freezer and avoid repeated freeze thaw cycles. Store at 4 °C for frequent use. Store at -20 °C for twelve months from the date of receipt.

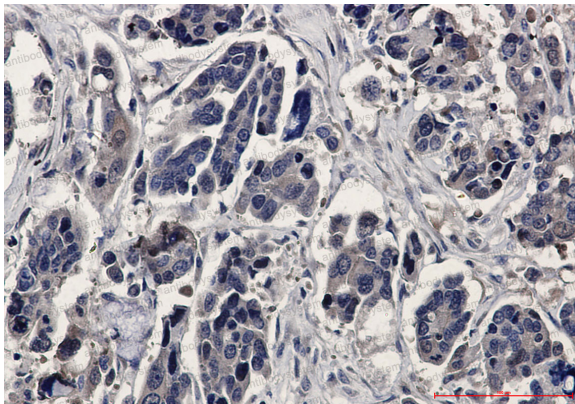
Note

For research use only.

Data Image

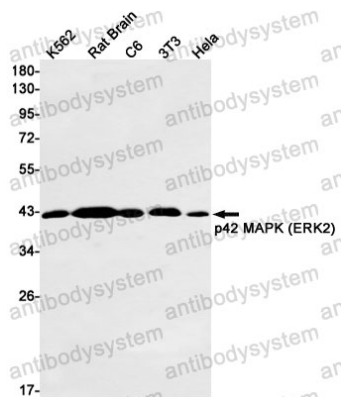
Immunofluorescence

Immunocytochemistry analysis of ERK2 (green) in K562 using ERK2 antibody, and DAPI (blue).



Immunohistochemical

Immunohistochemistry analysis of paraffin-embedded Human Cholangiocarcinoma using ERK2 antibody. High-pressure and temperature Sodium Citrate pH 6.0 was used for antigen retrieval.



Western blot

Western blot analysis of ERK2 in K562, rat Brain, C6, 3T3, Hela lysates using ERK2 antibody.