

Anti-TEAD1 Antibody (R1T58)

Summary

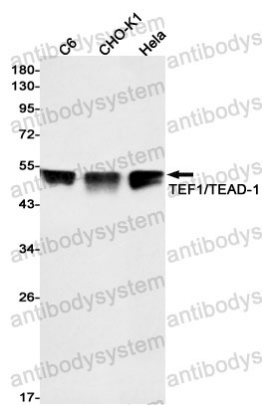
Catalog No.	RHD78801
Clone ID	R1T58
Host species	Rabbit
Tested applications	WB: 1:500-1:1000
Species reactivity	Human, Rat, Hamster
Form	Liquid
Storage buffer	0.01M PBS, pH 7.4, 0.05% BSA, 50% Glycerol, 0.05% Sodium azide.
Concentration	1 mg/ml
Purity	>95% by SDS-PAGE.
Clonality	Monoclonal
Isotype	IgG
Applications	WB
Target	TEAD-1, TEA domain family member 1, Transcriptional enhancer factor TEF-1, NTEF-1, Transcription factor 13, TEF1, TCF-13, Protein GT-IIIC, TEAD1, TCF13
Purification	Protein A/G purified from cell culture supernatant.
Endotoxin level	Please contact with the lab for this information.
Accession	P28347

Stability and Storage

Use a manual defrost freezer and avoid repeated freeze thaw cycles. Store at 4 °C for frequent use. Store at -20 °C for twelve months from the date of receipt.

Note

For research use only.

Data Image

Western blot

Western blot analysis of TEF1/TEAD1 in C6, CHO-K1, HeLa lysates using Transcriptional Enhancer Factor TEF 1 antibody.