

# Anti-POLD1 Antibody (R1T54)

## Summary

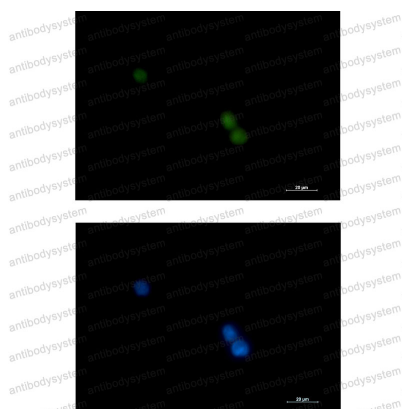
---

<b>Catalog No.</b>	RHD78701
<b>Clone ID</b>	R1T54
<b>Host species</b>	Rabbit
<b>Tested applications</b>	IF: 1:50-1:200, WB: 1:500-1:1000
<b>Species reactivity</b>	Human, Mouse, Rat
<b>Form</b>	Liquid
<b>Storage buffer</b>	0.01M PBS, pH 7.4, 0.05% BSA, 50% Glycerol, 0.05% Sodium azide.
<b>Concentration</b>	1 mg/ml
<b>Purity</b>	>95% by SDS-PAGE.
<b>Clonality</b>	Monoclonal
<b>Isotype</b>	IgG
<b>Applications</b>	IF, WB
<b>Target</b>	3'-5' exodeoxyribonuclease, DNA polymerase subunit delta p125, POLD1, DNA polymerase delta catalytic subunit, POLD
<b>Purification</b>	Protein A/G purified from cell culture supernatant.
<b>Endotoxin level</b>	Please contact with the lab for this information.
<b>Accession</b>	P28340
<b>Stability and Storage</b>	Use a manual defrost freezer and avoid repeated freeze thaw cycles. Store at 4 °C for frequent use. Store at -20 °C for twelve months from the date of receipt.

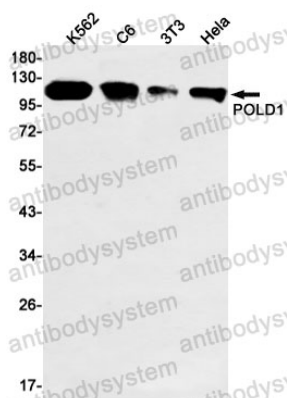
**Note**

For research use only.

## Data Image



Immunofluorescence



Western blot

Immunocytochemistry analysis of POLD1 (green) in K562 using POLD1 antibody, and DAPI (blue).

Western blot analysis of POLD1 in K562, C6, 3T3, Hela lysates using POLD1 antibody.