

# Anti-LOX Antibody (R1T46)

## Summary

---

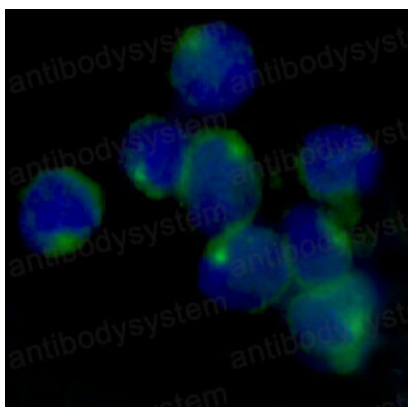
<b>Catalog No.</b>	RHD77701
<b>Clone ID</b>	R1T46
<b>Host species</b>	Rabbit
<b>Tested applications</b>	FCM: 1:20-1:100, IF: 1:50-1:200, IHC: 1:100-1:200, IP: 1:20-1:50, WB: 1:1000-1:2000
<b>Species reactivity</b>	Human, Mouse, Rat
<b>Form</b>	Liquid
<b>Storage buffer</b>	0.01M PBS, pH 7.4, 0.05% BSA, 50% Glycerol, 0.05% Sodium azide.
<b>Concentration</b>	1 mg/ml
<b>Purity</b>	>95% by SDS-PAGE.
<b>Clonality</b>	Monoclonal
<b>Isotype</b>	IgG
<b>Applications</b>	FCM, IF, IHC, IP, WB
<b>Target</b>	Lysyl oxidase, LOX, Protein-lysine 6-oxidase
<b>Purification</b>	Protein A/G purified from cell culture supernatant.
<b>Endotoxin level</b>	Please contact with the lab for this information.
<b>Accession</b>	P28300
<b>Stability and Storage</b>	Use a manual defrost freezer and avoid repeated freeze thaw cycles. Store at 4 °C for frequent use. Store at -20 °C for twelve months from the date of receipt.

**Note**

For research use only.

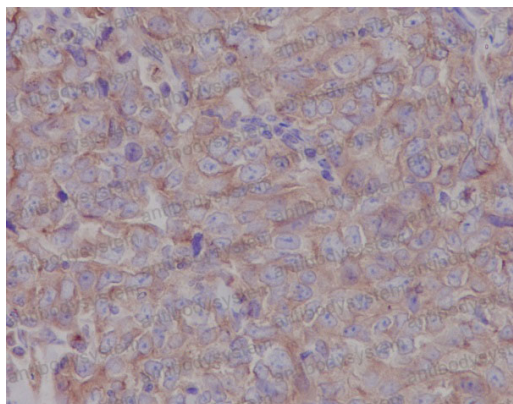
## Data Image

---



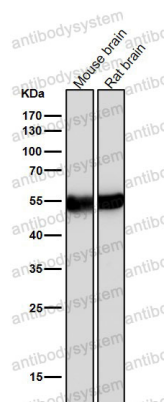
Immunofluorescence

Immunofluorescent analysis of Jurkat cells, using LOX Antibody .



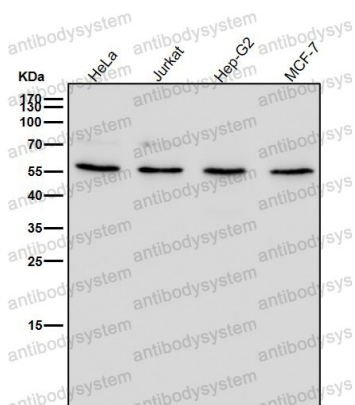
Immunohistochemical

Immunohistochemical analysis of paraffin-embedded human breast, using LOX Antibody.



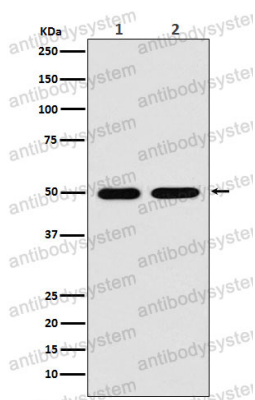
Western blot

All lanes use the Antibody at 1:2K dilution for 1 hour at room temperature.



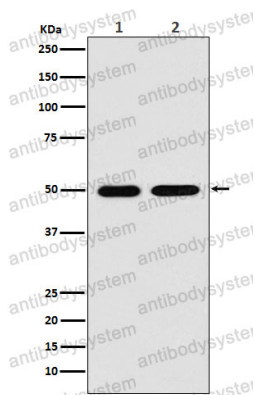
Western blot

All lanes use the Antibody at 1:2K dilution for 1 hour at room temperature.



Western blot

Western blot analysis of LOX expression in (1) Jurkat cell lysate; (2) Mouse brain lysate.



Western blot

Western blot analysis of LOX expression in (1) Jurkat cell lysate; (2) Mouse brain lysate.