

Anti-PSMB9 Antibody (R1T44)

Summary

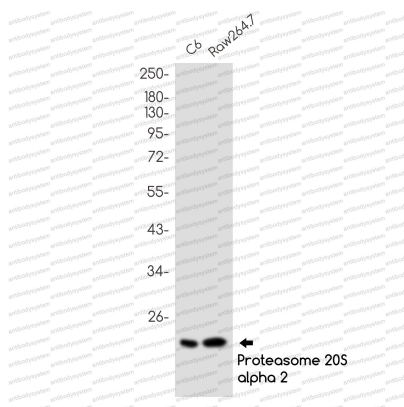
Catalog No.	RHD76201
Clone ID	R1T44
Host species	Rabbit
Tested applications	IF: 1:50-1:200, WB: 1:500-1:1000
Species reactivity	Human, Mouse, Rat
Form	Liquid
Storage buffer	0.01M PBS, pH 7.4, 0.05% BSA, 50% Glycerol, 0.05% Sodium azide.
Concentration	1 mg/ml
Purity	>95% by SDS-PAGE.
Clonality	Monoclonal
Isotype	IgG
Applications	IF, WB
Target	RING12, LMP2, PSMB6i, Low molecular mass protein 2, Proteasome subunit beta-1i, PSMB9, Proteasome subunit beta type-9, Multicatalytic endopeptidase complex chain 7, Macropain chain 7, Really interesting new gene 12 protein, Proteasome chain 7
Purification	Protein A/G purified from cell culture supernatant.
Endotoxin level	Please contact with the lab for this information.
Accession	P28065

Stability and Storage

Use a manual defrost freezer and avoid repeated freeze thaw cycles. Store at 4 °C for frequent use. Store at -20 °C for twelve months from the date of receipt.

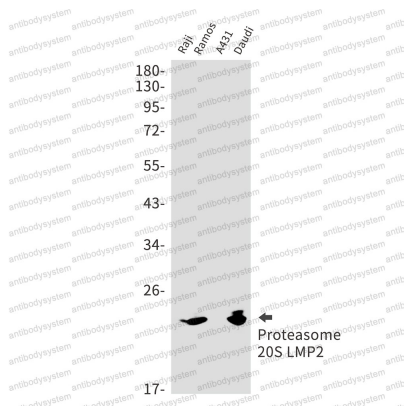
Note

For research use only.

Data Image

Western blot

Western blot analysis of Proteasome 20S LMP2 in C6, Raw264.7 lysates using Proteasome beta 9 antibody.



Western blot

Western blot analysis of Proteasome 20S LMP2 in Raji, Ramos, A431, Daudi lysates using Proteasome 20S LMP2 antibody.