

# Anti-Phospho-ERK1 (T202) + ERK2 (T185) Antibody (R1T26)

## Summary

---

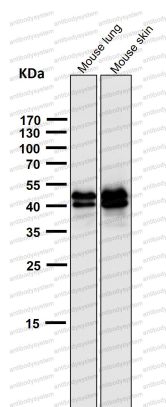
|                            |   |
|----------------------------|---|
| <b>Catalog No.</b>         | RHD73603  |
| <b>Clone ID</b>            | R1T26   |
| <b>Host species</b>        | Rabbit  |
| <b>Tested applications</b> | IF: 1:50-1:200, IHC: 1:100-1:200, IP: 1:20-1:50, WB: 1:1000-1:2000  |
| <b>Species reactivity</b>  | Human, Mouse, Rat   |
| <b>Form</b>                | Liquid  |
| <b>Storage buffer</b>      | 0.01M PBS, pH 7.4, 0.05% BSA, 50% Glycerol, 0.05% Sodium azide.   |
| <b>Concentration</b>       | 1 mg/ml   |
| <b>Purity</b>              | >95% by SDS-PAGE.   |
| <b>Clonality</b>           | Monoclonal  |
| <b>Isotype</b>             | IgG   |
| <b>Applications</b>        | IF, IHC, IP, WB   |
| <b>Target</b>              | Microtubule-associated protein 2 kinase, p44-MAPK, Extracellular signal-regulated kinase 1, ERK1, MAPK3, MAP kinase isoform p44, Mitogen-activated protein kinase 3, ERK-1, PRKM3, Insulin-stimulated MAP2 kinase, p44-ERK1, MAPK 3, MAP kinase 3, ERT2 |
| <b>Purification</b>        | Protein A/G purified from cell culture supernatant.   |
| <b>Endotoxin level</b>     | Please contact with the lab for this information.   |
| <b>Accession</b>           | P27361, P28482  |

**Stability and Storage**

Use a manual defrost freezer and avoid repeated freeze thaw cycles. Store at 4 °C for frequent use. Store at -20 °C for twelve months from the date of receipt.

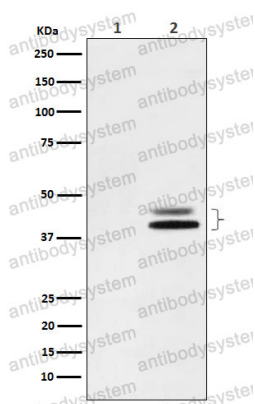
**Note**

For research use only.

**Data Image**

Western blot

All lanes use the Antibody at 1:2K dilution for 1 hour at room temperature.



Western blot

Western blot analysis of Phospho-ERK1 (T202) + ERK2 (T185) expression in (1) NIH/3T3 cell lysate; (2) NIH/3T3 cell lysate treated with PDGF.