

Anti-SFPQ Antibody (R1S28)

Summary

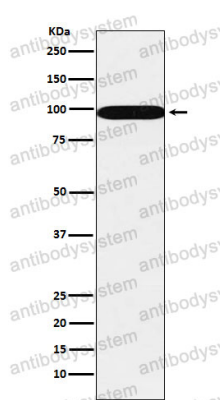
Catalog No.	RHD56102
Clone ID	R1S28
Host species	Rabbit
Tested applications	IF: 1:50-1:200, IHC: 1:100-1:200, WB: 1:1000-1:2000
Species reactivity	Human, Mouse, Rat
Form	Liquid
Storage buffer	0.01M PBS, pH 7.4, 0.05% BSA, 50% Glycerol, 0.05% Sodium azide.
Concentration	1 mg/ml
Purity	>95% by SDS-PAGE.
Clonality	Monoclonal
Isotype	IgG
Applications	IF, IHC, WB
Target	Splicing factor, proline- and glutamine-rich, PTB-associated-splicing factor, SFPQ, DNA-binding p52/p100 complex, 100 kDa subunit, Polypyrimidine tract-binding protein-associated-splicing factor, PSF, hPOMp100, 100 kDa DNA-pairing protein
Purification	Protein A/G purified from cell culture supernatant.
Endotoxin level	Please contact with the lab for this information.
Accession	P23246

Stability and Storage

Use a manual defrost freezer and avoid repeated freeze thaw cycles. Store at 4 °C for frequent use. Store at -20 °C for twelve months from the date of receipt.

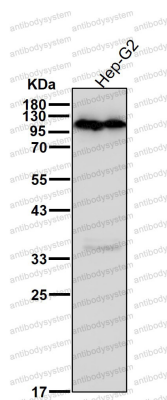
Note

For research use only.

Data Image

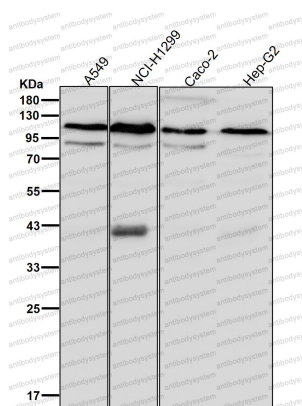
Western blot

Western blot analysis of SFPQ expression in A431 cell lysate.



Western blot

All lanes use the Antibody at 1:5K dilution for 1 hour at room temperature.



Western blot

All lanes use the Antibody at 1:2K dilution for 1 hour at room temperature.