

Anti-CD206/MRC1 Antibody (R1S19)

Summary

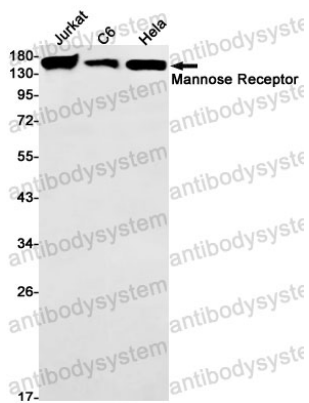
Catalog No.	RHD55202
Clone ID	R1S19
Host species	Rabbit
Tested applications	ELISA: 1:5000-1:20000, IF: 1:200-1:1000, IHC: 1:200-1:1000, IP: 1:50-1:200, WB: 1:5000-1:20000
Species reactivity	Human, Mouse, Rat
Form	Liquid
Storage buffer	0.01M PBS, pH 7.4, 0.05% BSA, 50% Glycerol, 0.05% Sodium azide.
Concentration	1 mg/ml
Purity	>95% by SDS-PAGE.
Clonality	Monoclonal
Isotype	IgG
Applications	ELISA, IF, IHC, IP, WB
Target	Human mannose receptor, MRC1, MMR, Macrophage mannose receptor 1, CD206, hMR, C-type lectin domain family 13 member D-like, CLEC13DL, MRC1L1, CLEC13D, C-type lectin domain family 13 member D, Macrophage mannose receptor 1-like protein 1
Purification	Protein A/G purified from cell culture supernatant.
Endotoxin level	Please contact with the lab for this information.
Accession	P22897

Stability and Storage

Use a manual defrost freezer and avoid repeated freeze thaw cycles. Store at 4 °C for frequent use. Store at -20 °C for twelve months from the date of receipt.

Note

For research use only.

Data Image

Western blot

Western blot analysis of Mannose Receptor in Jurkat, C6, HeLa lysates using Mannose Receptor antibody.