

Anti-CBL Antibody (R1S14)

Summary

Catalog No.	RHD53601
Clone ID	R1S14
Host species	Rabbit
Tested applications	IF: 1:50-1:200, IP: 1:20, WB: 1:500-1:1000
Species reactivity	Human
Form	Liquid
Storage buffer	0.01M PBS, pH 7.4, 0.05% BSA, 50% Glycerol, 0.05% Sodium azide.
Concentration	1 mg/ml
Purity	>95% by SDS-PAGE.
Clonality	Monoclonal
Isotype	IgG
Applications	IF, IP, WB
Target	CBL, RING finger protein 55, Proto-oncogene c-Cbl, CBL2, E3 ubiquitin-protein ligase CBL, RING-type E3 ubiquitin transferase CBL, Casitas B-lineage lymphoma proto-oncogene, Signal transduction protein CBL, RNF55
Purification	Protein A/G purified from cell culture supernatant.
Endotoxin level	Please contact with the lab for this information.
Accession	P22681

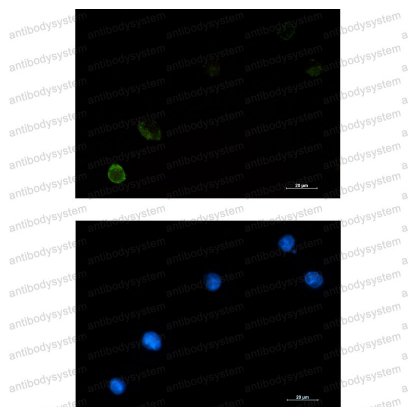
Recombinant Proteins & Antibodies

Stability and Storage

Use a manual defrost freezer and avoid repeated freeze thaw cycles. Store at 4 °C for frequent use. Store at -20 °C for twelve months from the date of receipt.

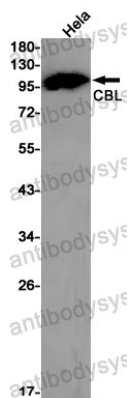
Note

For research use only.

Data Image

Immunofluorescence

Immunocytochemistry analysis of CBL (green) in K562 using CBL antibody, and DAPI (blue).



Western blot

Western blot analysis of CBL in HeLa lysates using CBL antibody.