

Anti-TBP Antibody (R1R44)

Summary

Catalog No.	RHD38001
Clone ID	R1R44
Host species	Rabbit
Tested applications	IF: 1:50-1:200, IHC: 1:50-1:100, IP: 1:20, WB: 1:500-1:1000
Species reactivity	Human, Mouse
Form	Liquid
Storage buffer	0.01M PBS, pH 7.4, 0.05% BSA, 50% Glycerol, 0.05% Sodium azide.
Concentration	1 mg/ml
Purity	>95% by SDS-PAGE.
Clonality	Monoclonal
Isotype	IgG
Applications	IF, IHC, IP, WB
Target	TF2D, TATA-binding factor, GTF2D1, Transcription initiation factor TFIID TBP subunit, TFIID, TBP, TATA sequence-binding protein, TATA-box factor, TATA-box-binding protein
Purification	Protein A/G purified from cell culture supernatant.
Endotoxin level	Please contact with the lab for this information.
Accession	P20226

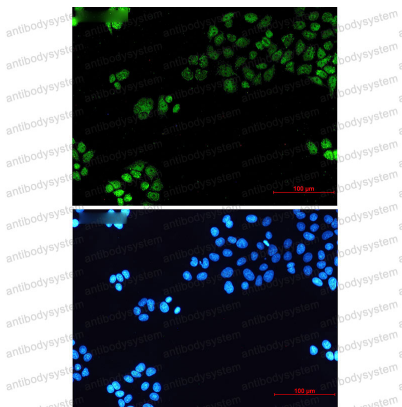
Stability and Storage

Use a manual defrost freezer and avoid repeated freeze thaw cycles. Store at 4 °C for frequent use. Store at -20 °C for twelve months from the date of receipt.

Note

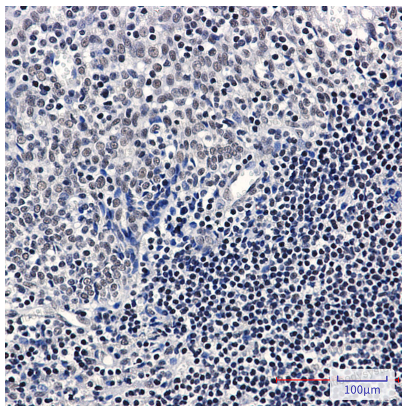
For research use only.

Data Image



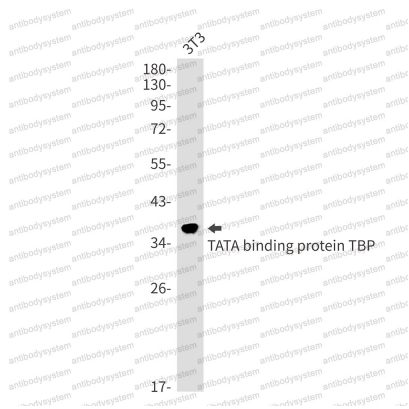
Immunofluorescence

Immunocytochemistry analysis of TATA binding protein TBP (green) in hela using TATA binding protein TBP antibody, and DAPI(blue).



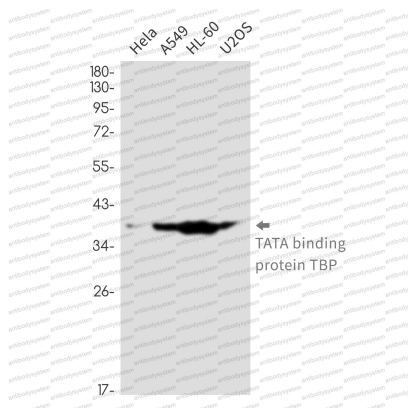
Immunohistochemical

Immunohistochemistry analysis of paraffin-embedded Human tonsil using TATA binding protein TBP antibody. High-pressure and temperature Sodium Citrate pH 6.0 was used for antigen retrieval.



Western blot

Western blot analysis of TATA binding protein TBP in 3T3 lysates using TATA Box Binding Protein antibody.



Western blot

Western blot analysis of TATA binding protein TBP in HeLa, A549, HL-60, U2OS lysates using TATA binding protein TBP antibody.