

# Anti-IL1RN/IL-1ra/IL1F3 Antibody (R1Q88)

## Summary

---

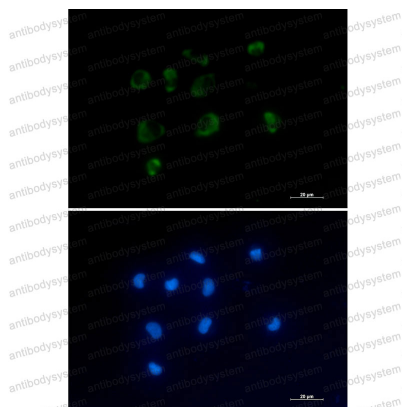
<b>Catalog No.</b>	RHD29703
<b>Clone ID</b>	R1Q88
<b>Host species</b>	Rabbit
<b>Tested applications</b>	IF: 1:50-1:200, IHC: 1:50-1:100, IP: 1:20, WB: 1:500-1:1000
<b>Species reactivity</b>	Human, Mouse
<b>Form</b>	Liquid
<b>Storage buffer</b>	0.01M PBS, pH 7.4, 0.05% BSA, 50% Glycerol, 0.05% Sodium azide.
<b>Concentration</b>	1 mg/ml
<b>Purity</b>	>95% by SDS-PAGE.
<b>Clonality</b>	Monoclonal
<b>Isotype</b>	IgG
<b>Applications</b>	IF, IHC, IP, WB
<b>Target</b>	Interleukin-1 receptor antagonist protein, IL1 inhibitor, IL1RN, IL-1ra, IL-1RN, Anakinra, IL1RA, IL1F3, IRAP, ICIL-1RA
<b>Purification</b>	Protein A/G purified from cell culture supernatant.
<b>Endotoxin level</b>	Please contact with the lab for this information.
<b>Accession</b>	P18510
<b>Stability and Storage</b>	Use a manual defrost freezer and avoid repeated freeze thaw cycles. Store at 4 °C for frequent use. Store at -20 °C for twelve months from the date of receipt.

**Note**

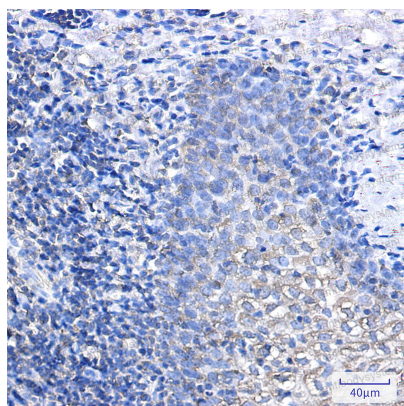
For research use only.

**Data Image**

---

**Immunofluorescence**

Immunocytochemistry analysis of IL 1 Receptor Antagonist Protein (green) in HEPG2 using IL 1 Receptor Antagonist Protein antibody, and DAPI(blue).

**Immunohistochemical**

Immunohistochemistry analysis of paraffin-embedded Human tonsil using IL-1RA antibody. High-pressure and temperature Sodium Citrate pH 6.0 was used for antigen retrieval.



Western blot

Western blot analysis of IL-1RA in K562, 3T3, HeLa lysates using IL-1RA antibody.