

Anti-PRKACA Antibody (R1Q49)

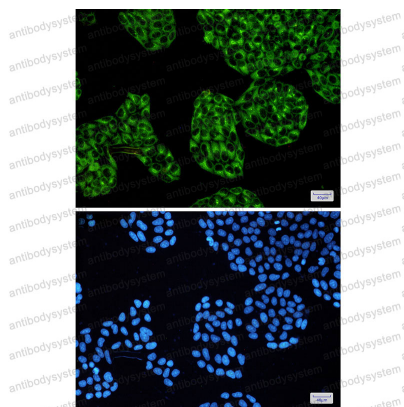
Summary

Catalog No.	RHD25101
Clone ID	R1Q49
Host species	Rabbit
Tested applications	IF: 1:50-1:200, IHC: 1:50-1:100, IP: 1:20, WB: 1:500-1:1000
Species reactivity	Human, Mouse, Rat
Form	Liquid
Storage buffer	0.01M PBS, pH 7.4, 0.05% BSA, 50% Glycerol, 0.05% Sodium azide.
Concentration	1 mg/ml
Purity	>95% by SDS-PAGE.
Clonality	Monoclonal
Isotype	IgG
Applications	IF, IHC, IP, WB
Target	PRKACA, PKACA, PKA C-alpha, cAMP-dependent protein kinase catalytic subunit alpha
Purification	Protein A/G purified from cell culture supernatant.
Endotoxin level	Please contact with the lab for this information.
Accession	P17612
Stability and Storage	Use a manual defrost freezer and avoid repeated freeze thaw cycles. Store at 4 °C for frequent use. Store at -20 °C for twelve months from the date of receipt.

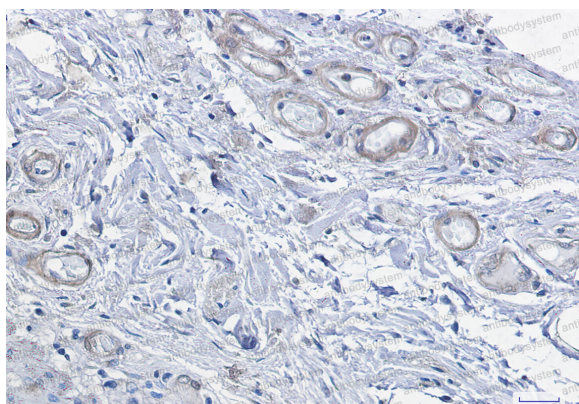
Note

For research use only.

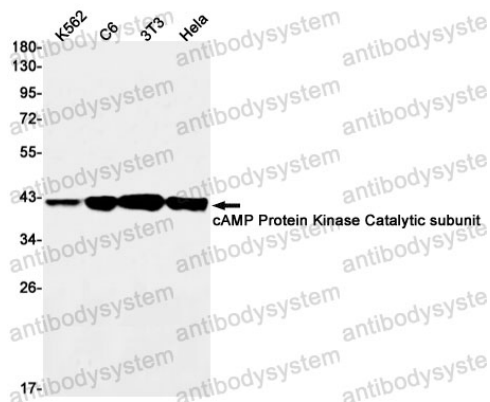
Data Image

**Immunofluorescence**

Immunocytochemistry analysis of cAMP Protein Kinase Catalytic subunit (green) in Hela using cAMP Protein Kinase Catalytic subunit antibody, and DAPI(blue)

**Immunohistochemical**

Immunohistochemistry analysis of paraffin-embedded Human colon cancer using cAMP Protein Kinase Catalytic subunit antibody. High-pressure and temperature Sodium Citrate pH 6.0 was used for antigen retrieval.



Western blot

Western blot analysis of cAMP Protein Kinase Catalytic subunit in K562, C6, 3T3, HeLa lysates using cAMP Protein Kinase Catalytic Subunit antibody.