

# Anti-Phospho-Histone H2A.X (Ser139) Antibody (R1P91)

## Summary

---

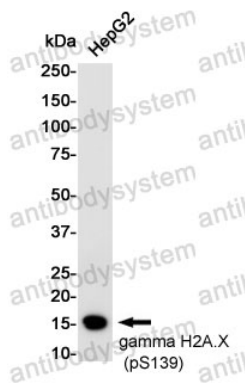
<b>Catalog No.</b>	RHD15008
<b>Clone ID</b>	R1P91
<b>Host species</b>	Rabbit
<b>Tested applications</b>	IP: 1:20, WB: 1:500-1:1000
<b>Species reactivity</b>	Human, Mouse, Rat
<b>Form</b>	Liquid
<b>Storage buffer</b>	0.01M PBS, pH 7.4, 0.05% BSA, 50% Glycerol, 0.05% Sodium azide.
<b>Concentration</b>	1 mg/ml
<b>Purity</b>	>95% by SDS-PAGE.
<b>Clonality</b>	Monoclonal
<b>Isotype</b>	IgG
<b>Applications</b>	ICC, IF, IHC, IP, WB
<b>Target</b>	H2a/x, Histone H2A.X, H2AFX, Histone H2AX, H2AX, Phospho-Histone H2A.X (Ser139), pS139
<b>Purification</b>	Protein A/G purified from cell culture supernatant.
<b>Endotoxin level</b>	Please contact with the lab for this information.
<b>Accession</b>	P16104

**Stability and Storage**

Use a manual defrost freezer and avoid repeated freeze thaw cycles. Store at 4 °C for frequent use. Store at -20 °C for twelve months from the date of receipt.

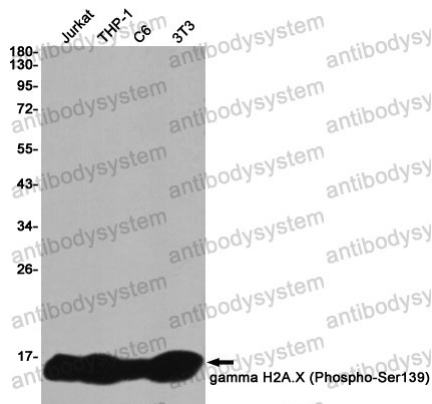
**Note**

For research use only.

**Data Image**

Western blot

Western blot analysis of gamma H2A.X (Phospho-Ser139) in HepG2 lysates using Phospho-Histone H2A.X (Ser139) antibody.



Western blot

Western blot analysis of gamma H2A.X (Phospho-Ser139) in Jurkat, THP-1, C6, 3T3 lysates using gamma H2A.X (Phospho-Ser139) antibody.