

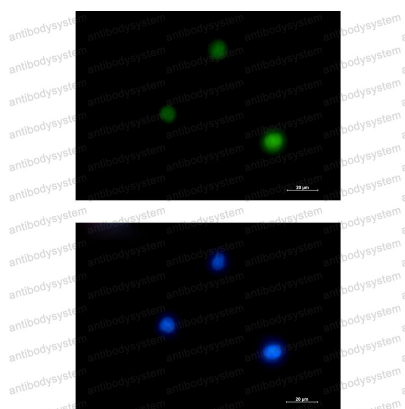
Anti-GATA1 Antibody (R1P87)

Summary

Catalog No.	RHD14401
Clone ID	R1P87
Host species	Rabbit
Tested applications	IF: 1:50-1:200, IP: 1:20, WB: 1:500-1:1000
Species reactivity	Human
Form	Liquid
Storage buffer	0.01M PBS, pH 7.4, 0.05% BSA, 50% Glycerol, 0.05% Sodium azide.
Concentration	1 mg/ml
Purity	>95% by SDS-PAGE.
Clonality	Monoclonal
Isotype	IgG
Applications	IF, IP, WB
Target	GATA-1, GF-1, NF-E1 DNA-binding protein, ERYF1, GF1, Erythroid transcription factor, GATA-binding factor 1, GATA1, Eryf1
Purification	Protein A/G purified from cell culture supernatant.
Endotoxin level	Please contact with the lab for this information.
Accession	P15976
Stability and Storage	Use a manual defrost freezer and avoid repeated freeze thaw cycles. Store at 4 °C for frequent use. Store at -20 °C for twelve months from the date of receipt.

Note

For research use only.

Data Image**Immunofluorescence**

Immunocytochemistry analysis of GATA1 (green) in K562 using GATA1 antibody, and DAPI(blue).

**Western blot**

Western blot analysis of GATA1 in K562, HeLa lysates using GATA1 antibody.