

Anti-CD227/MUC1 Antibody (R1P86)

Summary

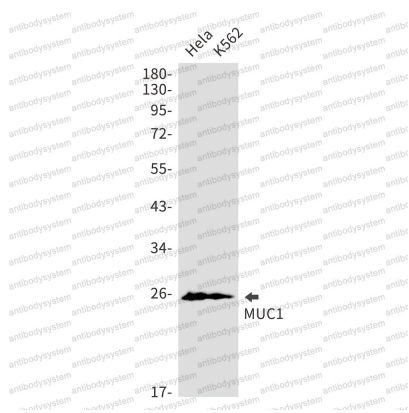
Catalog No.	RHD14204
Clone ID	R1P86
Host species	Rabbit
Tested applications	IF: 1:50-1:200, IHC: 1:50-1:100, IP: 1:20, WB: 1:500-1:1000
Species reactivity	Human
Form	Liquid
Storage buffer	0.01M PBS, pH 7.4, 0.05% BSA, 50% Glycerol, 0.05% Sodium azide.
Concentration	1 mg/ml
Purity	>95% by SDS-PAGE.
Clonality	Monoclonal
Isotype	IgG
Applications	IF, IHC, IP, WB
Target	PEMT, CA 15-3, H23AG, Peanut-reactive urinary mucin, PEM, EMA, Cancer antigen 15-3, MUC-1, Episialin, MUC1-CT, MUC1-beta, Tumor-associated mucin, CD227, Polymorphic epithelial mucin, KL-6, MUC1-alpha, MUC1, PUM, Krebs von den Lungen-6, MUC1-NT, Tumor-associated epithelial membrane antigen, Mucin-1, Breast carcinoma-associated antigen DF3, Carcinoma-associated mucin
Purification	Protein A/G purified from cell culture supernatant.
Endotoxin level	Please contact with the lab for this information.
Accession	P15941

Stability and Storage

Use a manual defrost freezer and avoid repeated freeze thaw cycles. Store at 4 °C for frequent use. Store at -20 °C for twelve months from the date of receipt.

Note

For research use only.

Data Image

Western blot

Western blot analysis of MUC1 in Hela, K562 lysates using Mucin 1 antibody.