

# Anti-RPA2 Antibody (R1P85)

## Summary

---

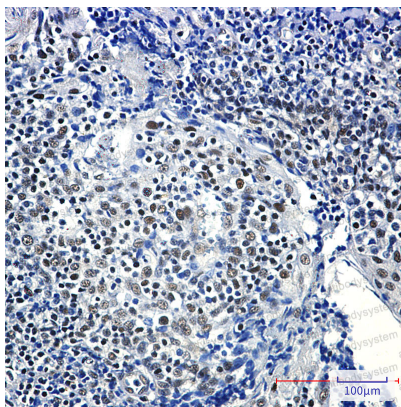
<b>Catalog No.</b>	RHD14101
<b>Clone ID</b>	R1P85
<b>Host species</b>	Rabbit
<b>Tested applications</b>	IHC: 1:50-1:100, IP: 1:20, WB: 1:500-1:1000
<b>Species reactivity</b>	Human, Mouse, Rat, Hamster
<b>Form</b>	Liquid
<b>Storage buffer</b>	0.01M PBS, pH 7.4, 0.05% BSA, 50% Glycerol, 0.05% Sodium azide.
<b>Concentration</b>	1 mg/ml
<b>Purity</b>	>95% by SDS-PAGE.
<b>Clonality</b>	Monoclonal
<b>Isotype</b>	IgG
<b>Applications</b>	IHC, IP, WB
<b>Target</b>	RPA34, Replication protein A 34 kDa subunit, Replication protein A 32 kDa subunit, RF-A protein 2, RP-A p34, Replication factor A protein 2, REPA2, RPA2, RPA32, RP-A p32
<b>Purification</b>	Protein A/G purified from cell culture supernatant.
<b>Endotoxin level</b>	Please contact with the lab for this information.
<b>Accession</b>	P15927

**Stability and Storage**

Use a manual defrost freezer and avoid repeated freeze thaw cycles. Store at 4 °C for frequent use. Store at -20 °C for twelve months from the date of receipt.

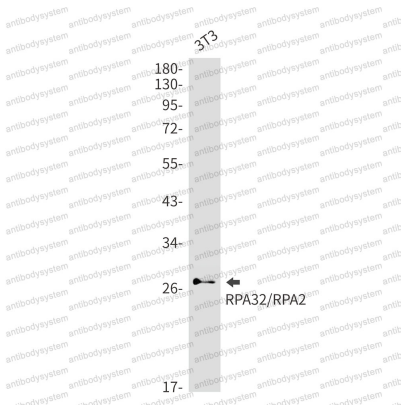
**Note**

For research use only.

**Data Image**

**Immunohistochemical**

Immunohistochemistry analysis of paraffin-embedded Human tonsil using RPA32/RPA2 antibody. High-pressure and temperature Sodium Citrate pH 6.0 was used for antigen retrieval.



**Western blot**

Western blot analysis of RPA32/RPA2 in 3T3 lysates using RPA32 antibody.



Western blot

Western blot analysis of RPA32/RPA2 in HeLa, CHO-K1, C6, Jurkat lysates using RPA32/RPA2 antibody.