

Anti-PLA2G2A Antibody (R1P35)

Summary

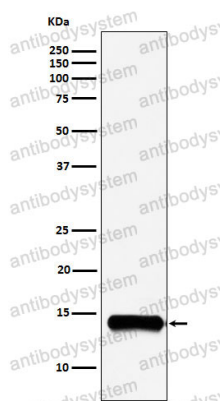
| | |
|----------------------------|---|
| Catalog No. | RHD05102 |
| Clone ID | R1P35 |
| Host species | Rabbit |
| Tested applications | WB: 1:1000-1:2000 |
| Species reactivity | Human, Mouse, Rat |
| Form | Liquid |
| Storage buffer | 0.01M PBS, pH 7.4, 0.05% BSA, 50% Glycerol, 0.05% Sodium azide. |
| Concentration | 1 mg/ml |
| Purity | >95% by SDS-PAGE. |
| Clonality | Monoclonal |
| Isotype | IgG |
| Applications | WB |
| Target | Phosphatidylcholine 2-acylhydrolase 2A, NPS-PLA2, RASF-A, Non-pancreatic secretory phospholipase A2, Group IIA phospholipase A2, GIIC sPLA2, PLA2L, PLA2G2A, PLA2B, Phospholipase A2, membrane associated |
| Purification | Protein A/G purified from cell culture supernatant. |
| Endotoxin level | Please contact with the lab for this information. |
| Accession | P14555 |

Stability and Storage

Use a manual defrost freezer and avoid repeated freeze thaw cycles. Store at 4 °C for frequent use. Store at -20 °C for twelve months from the date of receipt.

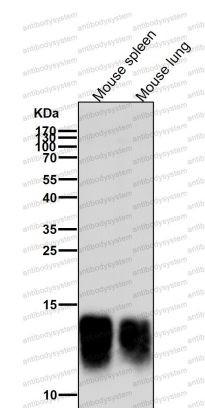
Note

For research use only.

Data Image

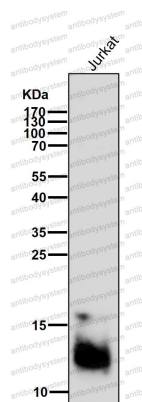
Western blot

Western blot analysis of PLA2G2A expression in A549 cell lysate.



Western blot

All lanes use the Antibody at 1:2K dilution for 1 hour at room temperature.



Western blot

All lanes use the Antibody at 1:2K dilution for 1 hour at room temperature.