

Anti-HSD3B1 Antibody (R1P20)

Summary

Catalog No.	RHD02801
Clone ID	R1P20
Host species	Rabbit
Tested applications	IF: 1:50-1:200, WB: 1:1000-1:2000
Species reactivity	Human
Form	Liquid
Storage buffer	0.01M PBS, pH 7.4, 0.05% BSA, 50% Glycerol, 0.05% Sodium azide.
Concentration	1 mg/ml
Purity	>95% by SDS-PAGE.
Clonality	Monoclonal
Isotype	IgG
Applications	IF, WB
Target	3 beta-hydroxysteroid dehydrogenase/Delta 5-->4-isomerase type I, HSDB3A, 3-beta-hydroxy-5-ene steroid dehydrogenase, 3-beta-HSD I, 3-beta-hydroxy-Delta(5)-steroid dehydrogenase, 3BH, 3-beta-hydroxysteroid 3-dehydrogenase, 3 beta-hydroxysteroid dehydrogenase/Delta 5-->4-isomerase type 1, HSD3B1, Steroid Delta-isomerase, Trophoblast antigen FDO161G, Dihydrotestosterone oxidoreductase, Delta-5-3-ketosteroid isomerase
Purification	Protein A/G purified from cell culture supernatant.
Endotoxin level	Please contact with the lab for this information.

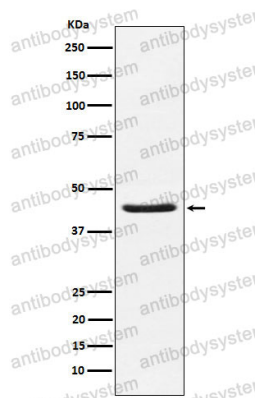
Accession P14060**Stability and Storage**

Use a manual defrost freezer and avoid repeated freeze thaw cycles. Store at 4 °C for frequent use. Store at -20 °C for twelve months from the date of receipt.

Note

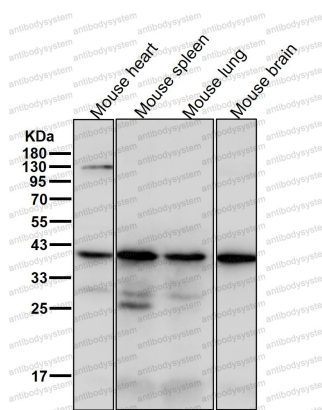
For research use only.

Data Image



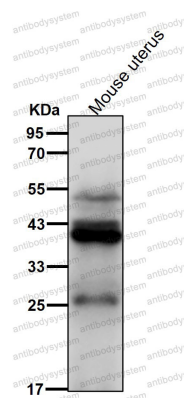
Western blot

Western blot analysis of HSD3B1 expression in Human placenta lysate.



Western blot

All lanes use the Antibody at 1:1K dilution for 1 hour at room temperature.



Western blot

All lanes use the Antibody at 1:1K dilution for 1 hour at room temperature.