

Anti-CD225/IFITM1 Antibody (R1N85)

Summary

Catalog No.	RHC96501
Clone ID	R1N85
Host species	Rabbit
Tested applications	IF: 1:50-1:200, IHC: 1:50-1:100, IP: 1:20, WB: 1:500-1:1000
Species reactivity	Human
Form	Liquid
Storage buffer	0.01M PBS, pH 7.4, 0.05% BSA, 50% Glycerol, 0.05% Sodium azide.
Concentration	1 mg/ml
Purity	>95% by SDS-PAGE.
Clonality	Monoclonal
Isotype	IgG
Applications	IF, IHC, IP, WB
Target	Interferon-induced protein 17, Interferon-inducible protein 9-27, Leu-13 antigen, Interferon-induced transmembrane protein 1, CD225, IFI17, DSPA2a, Dispanin subfamily A member 2a, IFITM1
Purification	Protein A/G purified from cell culture supernatant.
Endotoxin level	Please contact with the lab for this information.
Accession	P13164

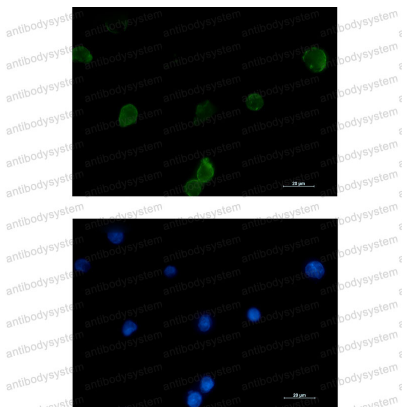
Stability and Storage

Use a manual defrost freezer and avoid repeated freeze thaw cycles. Store at 4 °C for frequent use. Store at -20 °C for twelve months from the date of receipt.

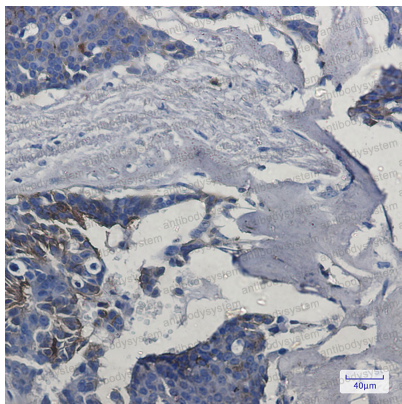
Note

For research use only.

Data Image



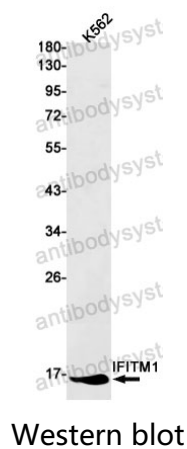
Immunofluorescence



Immunohistochemical

Immunocytochemistry analysis of IFITM1 (green) in K562 using IFITM1 antibody, and DAPI (blue).

Immunohistochemistry analysis of paraffin-embedded Human breast cancer tissue using IFITM1 antibody. High-pressure and temperature Sodium Citrate pH 6.0 was used for antigen retrieval.



Western blot analysis of IFITM1 in K562 lysates using IFITM1 antibody.