

Anti-XRCC6 Antibody (R1N82)

Summary

Catalog No.	RHC95901
Clone ID	R1N82
Host species	Rabbit
Tested applications	IF: 1:50-1:200, IHC: 1:50-1:100, WB: 1:500-1:1000
Species reactivity	Human
Form	Liquid
Storage buffer	0.01M PBS, pH 7.4, 0.05% BSA, 50% Glycerol, 0.05% Sodium azide.
Concentration	1 mg/ml
Purity	>95% by SDS-PAGE.
Clonality	Monoclonal
Isotype	IgG
Applications	IF, IHC, WB
Target	Lupus Ku autoantigen protein p70, 5'-dRP lyase Ku70, Thyroid-lupus autoantigen, XRCC6, CTC box-binding factor 75 kDa subunit, X-ray repair complementing defective repair in Chinese hamster cells 6, G22P1, X-ray repair cross-complementing protein 6, ATP-dependent DNA helicase 2 subunit 1, DNA repair protein XRCC6, TLAA, ATP-dependent DNA helicase II 70 kDa subunit, CTCBF, 70 kDa subunit of Ku antigen, Ku70, 5'-deoxyribose-5-phosphate lyase Ku70, CTC75
Purification	Protein A/G purified from cell culture supernatant.
Endotoxin level	Please contact with the lab for this information.

Accession P12956

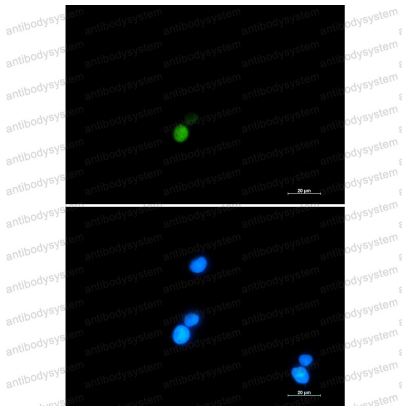
Stability and Storage

Use a manual defrost freezer and avoid repeated freeze thaw cycles. Store at 4 °C for frequent use. Store at -20 °C for twelve months from the date of receipt.

Note

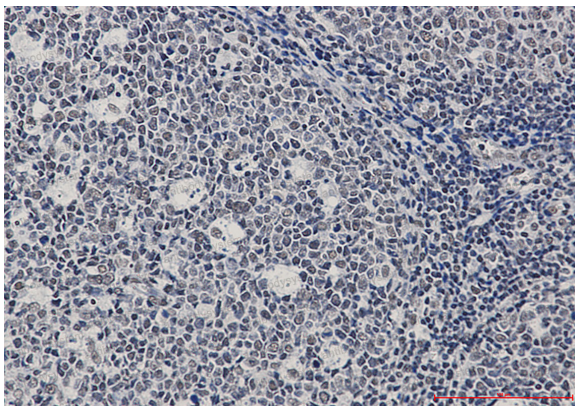
For research use only.

Data Image



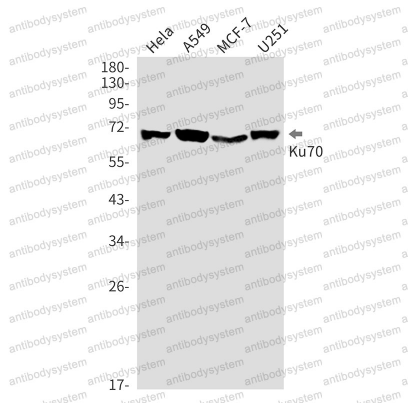
Immunofluorescence

Immunocytochemistry analysis of Ku70 (green) in CEM using Ku70 antibody, and DAPI (blue).



Immunohistochemical

Immunohistochemistry analysis of paraffin-embedded Human tonsil using Ku70 antibody. High-pressure and temperature Sodium Citrate pH 6.0 was used for antigen retrieval.



Western blot

Western blot analysis of Ku70 in Hela, A549, MCF-7, U251 lysates using Ku70 antibody.