

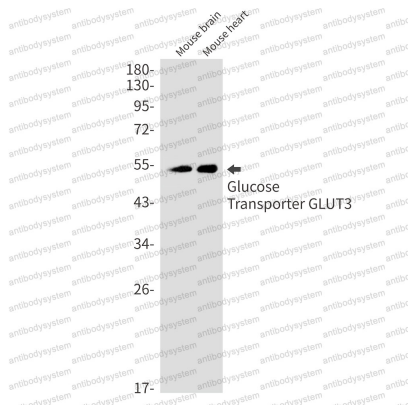
Anti-SLC2A3 Antibody (R1N28)

Summary

Catalog No.	RHC86101
Clone ID	R1N28
Host species	Rabbit
Tested applications	WB: 1:500-1:1000
Species reactivity	Human, Mouse, Rat
Form	Liquid
Storage buffer	0.01M PBS, pH 7.4, 0.05% BSA, 50% Glycerol, 0.05% Sodium azide.
Concentration	1 mg/ml
Purity	>95% by SDS-PAGE.
Clonality	Monoclonal
Isotype	IgG
Applications	WB
Target	GLUT-3, GLUT3, SLC2A3, Solute carrier family 2, facilitated glucose transporter member 3, Glucose transporter type 3, brain
Purification	Protein A/G purified from cell culture supernatant.
Endotoxin level	Please contact with the lab for this information.
Accession	P11169
Stability and Storage	Use a manual defrost freezer and avoid repeated freeze thaw cycles. Store at 4 °C for frequent use. Store at -20 °C for twelve months from the date of receipt.

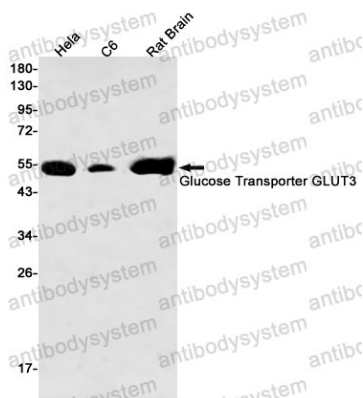
Note For research use only.

Data Image



Western blot

Western blot analysis of Glucose Transporter GLUT3 in mouse brain, mouse heart lysates using Glucose Transporter GLUT3 antibody.



Western blot

Western blot analysis of Glucose Transporter GLUT3 in HeLa, C6, rat Brain lysates using Glucose Transporter GLUT3 antibody.