

Anti-HSPD1 Antibody (R1N10)

Summary

Catalog No.	RHC83702
Clone ID	R1N10
Host species	Rabbit
Tested applications	IF: 1:50-1:200, IHC: 1:50-1:100, IP: 1:20, WB: 1:500-1:1000
Species reactivity	Mouse, Rat
Form	Liquid
Storage buffer	0.01M PBS, pH 7.4, 0.05% BSA, 50% Glycerol, 0.05% Sodium azide.
Concentration	1 mg/ml
Purity	>95% by SDS-PAGE.
Clonality	Monoclonal
Isotype	IgG
Applications	IF, IHC, IP, WB
Target	60 kDa heat shock protein, mitochondrial, HSP-60, HuCHA60, Chaperonin 60, HSP60, Mitochondrial matrix protein P1, Hsp60, HSPD1, 60 kDa chaperonin, CPN60, P60 lymphocyte protein, Heat shock protein 60
Purification	Protein A/G purified from cell culture supernatant.
Endotoxin level	Please contact with the lab for this information.
Accession	P10809

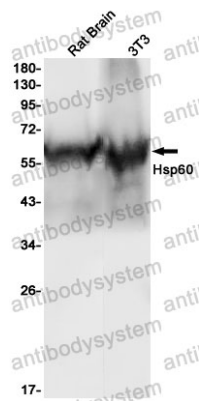
Stability and Storage

Use a manual defrost freezer and avoid repeated freeze thaw cycles. Store at 4 °C for frequent use. Store at -20 °C for twelve months from the date of receipt.

Note

For research use only.

Data Image



Western blot

Western blot analysis of Hsp60 in rat Brain, 3T3 lysates using Hsp60 antibody.