

Anti-CYP2D6 Antibody (R1M79)

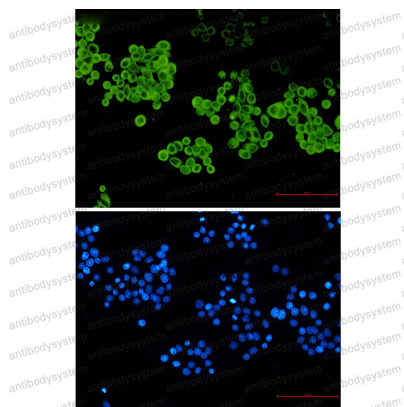
Summary

Catalog No.	RHC82301
Clone ID	R1M79
Host species	Rabbit
Tested applications	IF: 1:50-1:200, IHC: 1:50-1:100, WB: 1:500-1:1000
Species reactivity	Human
Form	Liquid
Storage buffer	0.01M PBS, pH 7.4, 0.05% BSA, 50% Glycerol, 0.05% Sodium azide.
Concentration	1 mg/ml
Purity	>95% by SDS-PAGE.
Clonality	Monoclonal
Isotype	IgG
Applications	IF, IHC, WB
Target	Debrisoquine 4-hydroxylase, CYP2DL1, Cytochrome P450 2D6, Cytochrome P450-DB1, CYP2D6, Cholesterol 25-hydroxylase, CYP2D6
Purification	Protein A/G purified from cell culture supernatant.
Endotoxin level	Please contact with the lab for this information.
Accession	P10635
Stability and Storage	Use a manual defrost freezer and avoid repeated freeze thaw cycles. Store at 4 °C for frequent use. Store at -20 °C for twelve months from the date of receipt.

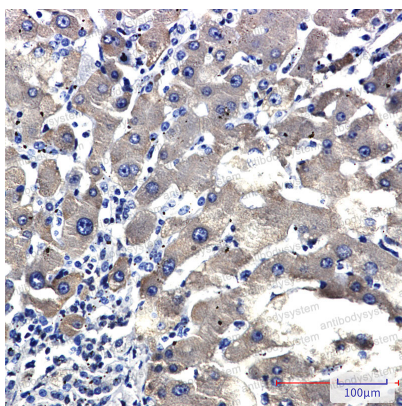
Note

For research use only.

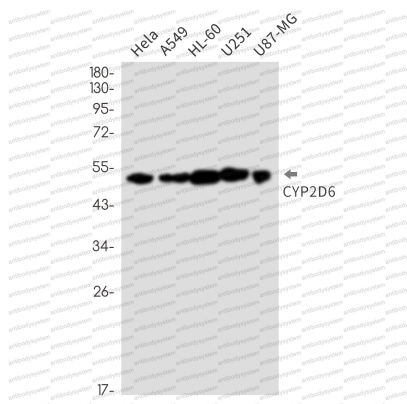
Data Image

**Immunofluorescence**

Immunocytochemistry analysis of CYP2D6 (green) in hela using CYP2D6 antibody, and DAPI(blue)

**Immunohistochemical**

Immunohistochemistry analysis of paraffin-embedded liver cancer using CYP2D6 antibody. High-pressure and temperature Sodium Citrate pH 6.0 was used for antigen retrieval.



Western blot

Western blot analysis of CYP2D6 in HeLa, A549, HL-60, U251, U87-MG lysates using Cytochrome P450 2D6 antibody.