

Anti-ENO2/NSE Antibody (R1L94)

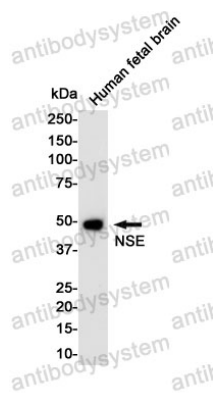
Summary

Catalog No.	RHC38601
Clone ID	R1L94
Host species	Rabbit
Tested applications	IP: 1:20, WB: 1:500-1:1000
Species reactivity	Human, Mouse, Rat
Form	Liquid
Storage buffer	0.01M PBS, pH 7.4, 0.05% BSA, 50% Glycerol, 0.05% Sodium azide.
Concentration	1 mg/ml
Purity	>95% by SDS-PAGE.
Clonality	Monoclonal
Isotype	IgG
Applications	IP, WB
Target	2-phospho-D-glycerate hydro-lyase, NSE, ENO2, Neural enolase, Gamma-enolase, Neuron-specific enolase, Enolase 2
Purification	Protein A/G purified from cell culture supernatant.
Endotoxin level	Please contact with the lab for this information.
Accession	P09104
Stability and Storage	Use a manual defrost freezer and avoid repeated freeze thaw cycles. Store at 4 °C for frequent use. Store at -20 °C for twelve months from the date of receipt.

Note

For research use only.

Data Image



Western blot

Western blot analysis of NSE in Human Fetal Brain lysates using NSE antibody.