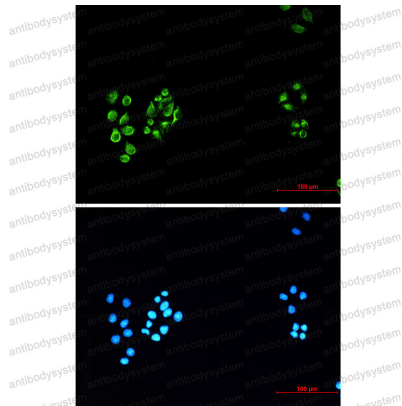


Anti-VIM/Vimentin Antibody (R1L76)

Summary

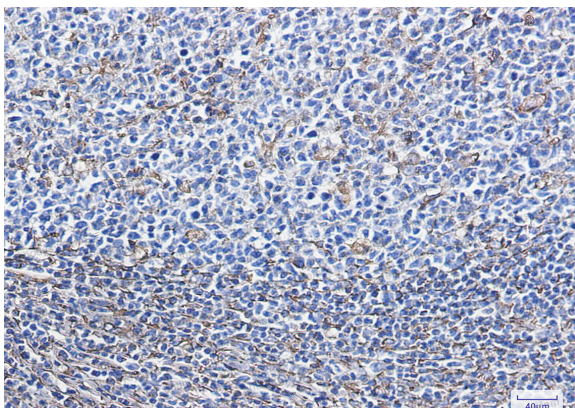
Catalog No.	RHC35308
Clone ID	R1L76
Host species	Rabbit
Tested applications	IF: 1:50-1:200, IHC: 1:50-1:100, WB: 1:500-1:1000
Species reactivity	Human, Mouse, Rat, Hamster
Form	Liquid
Storage buffer	0.01M PBS, pH 7.4, 0.05% BSA, 50% Glycerol, 0.05% Sodium azide.
Concentration	1 mg/ml
Purity	>95% by SDS-PAGE.
Clonality	Monoclonal
Isotype	IgG
Applications	IF, IHC, WB
Target	Vimentin, VIM
Purification	Protein A/G purified from cell culture supernatant.
Endotoxin level	Please contact with the lab for this information.
Accession	P08670
Stability and Storage	Use a manual defrost freezer and avoid repeated freeze thaw cycles. Store at 4 °C for frequent use. Store at -20 °C for twelve months from the date of receipt.
Note	For research use only.

Data Image



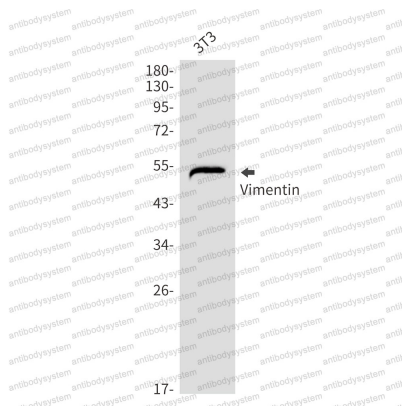
Immunofluorescence

Immunocytochemistry analysis of Vimentin (green) in Hela using Vimentin antibody, and DAPI (blue).



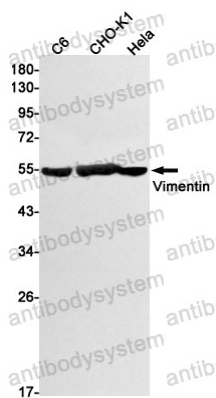
Immunohistochemical

Immunohistochemistry analysis of paraffin-embedded Human tonsil using Vimentin antibody. High-pressure and temperature Sodium Citrate pH 6.0 was used for antigen retrieval.



Western blot

Western blot analysis of Vimentin in 3T3 lysates using Vimentin antibody.



Western blot

Western blot analysis of Vimentin in C6, CHO-K1, HeLa lysates using Vimentin antibody.