

Anti-MSMB Antibody (R1L40)

Summary

Catalog No.	RHC30101
Clone ID	R1L40
Host species	Rabbit
Tested applications	IHC: 1:100-1:200, IP: 1:20-1:50, WB: 1:1000-1:2000
Species reactivity	Human
Form	Liquid
Storage buffer	0.01M PBS, pH 7.4, 0.05% BSA, 50% Glycerol, 0.05% Sodium azide.
Concentration	1 mg/ml
Purity	>95% by SDS-PAGE.
Clonality	Monoclonal
Isotype	IgG
Applications	IHC, IP, WB
Target	IGBF, Prostate secretory protein of 94 amino acids, PSP-94, PSP94, Seminal plasma beta-inhibin, Beta-microseminoprotein, MSMB, Prostate secreted seminal plasma protein, PRSP, PN44, Immunoglobulin-binding factor
Purification	Protein A/G purified from cell culture supernatant.
Endotoxin level	Please contact with the lab for this information.
Accession	P08118

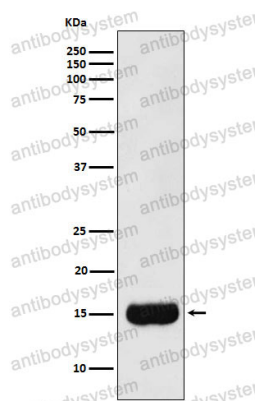
Stability and Storage

Use a manual defrost freezer and avoid repeated freeze thaw cycles. Store at 4 °C for frequent use. Store at -20 °C for twelve months from the date of receipt.

Note

For research use only.

Data Image



Western blot

Western blot analysis of Prostate Secretory Protein/PSP expression in Human prostate cancer lysate.