

Anti-GALT Antibody (R1L23)

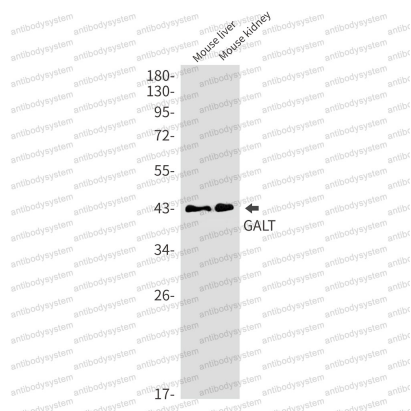
Summary

Catalog No.	RHC28201
Clone ID	R1L23
Host species	Rabbit
Tested applications	IP: 1:20, WB: 1:500-1:1000
Species reactivity	Human, Mouse, Rat
Form	Liquid
Storage buffer	0.01M PBS, pH 7.4, 0.05% BSA, 50% Glycerol, 0.05% Sodium azide.
Concentration	1 mg/ml
Purity	>95% by SDS-PAGE.
Clonality	Monoclonal
Isotype	IgG
Applications	IP, WB
Target	GALT, UDP-glucose--hexose-1-phosphate uridylyltransferase, Gal-1-P uridylyltransferase, Galactose-1-phosphate uridylyltransferase
Purification	Protein A/G purified from cell culture supernatant.
Endotoxin level	Please contact with the lab for this information.
Accession	P07902
Stability and Storage	Use a manual defrost freezer and avoid repeated freeze thaw cycles. Store at 4 °C for frequent use. Store at -20 °C for twelve months from the date of receipt.

Note

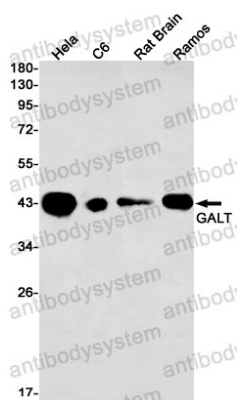
For research use only.

Data Image



Western blot

Western blot analysis of GALT in mouse liver, mouse kidney lysates using GALT antibody.



Western blot

Western blot analysis of GALT in Hela, C6, rat Brain, Ramos lysates using GALT antibody.